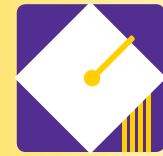
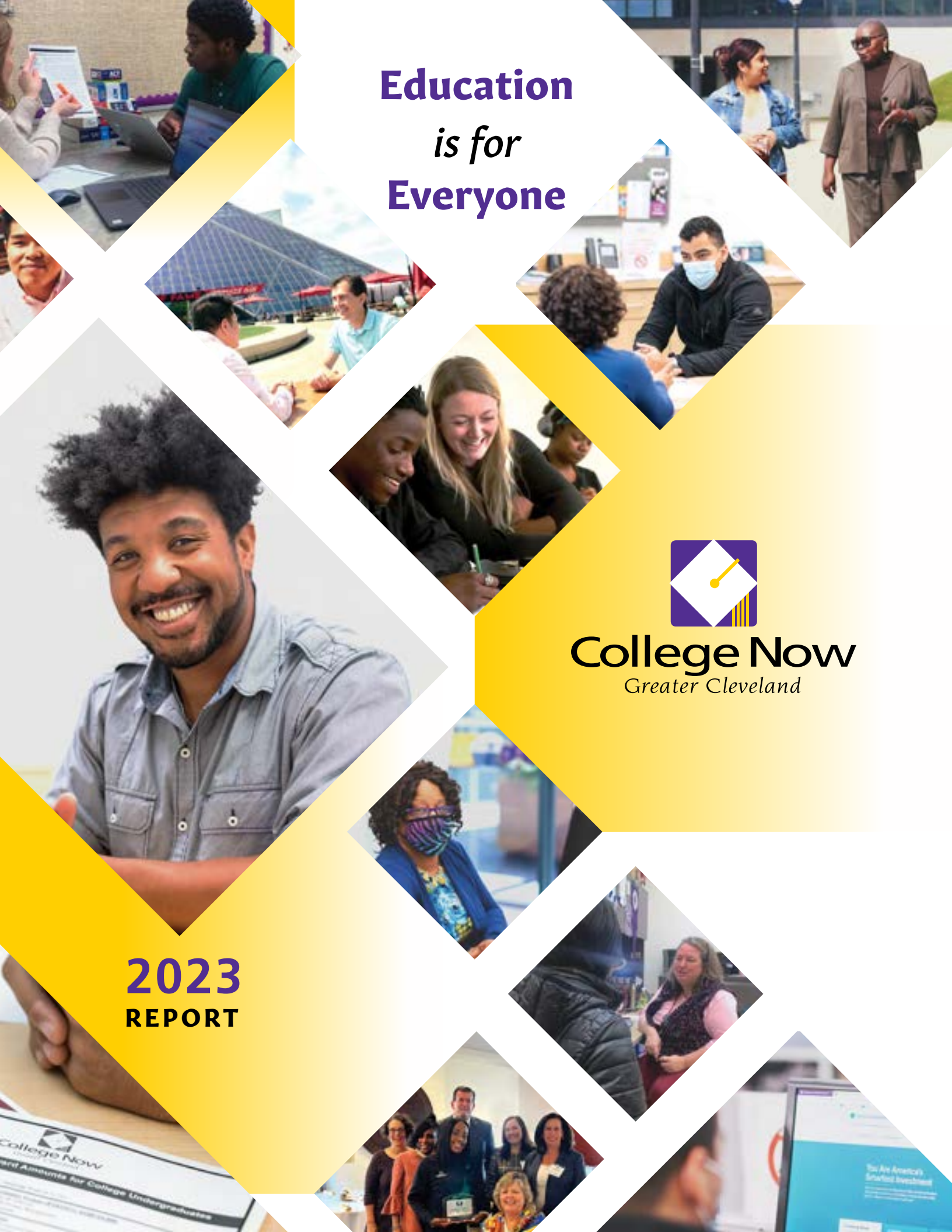


# Education *is for* Everyone



**College Now**  
*Greater Cleveland*

**2023**  
**REPORT**



# Message from the Board Chair and CEO

Dear friends of College Now,

We have always known that education is important for success after high school—to find a sustainable career path and jobs that provide a livable wage. But, until recently, our work didn't always delve as deeply as it could to help students understand the various pathways available to them after high school. Education and postsecondary success aren't reserved just for those who attend a two- or four-year college or university—it is for every student, following any type of postsecondary pathway, be it a trade program, certificate, the military, a training class or something else.

## Education is for everyone, in every form.

Our work over the last year has centered on helping to ensure that every student has the access and support to pursue the postsecondary pathway that will lead them to their own definition of success in our modern economy. Whether it is the result of the COVID-19 pandemic, the changing workforce landscape or – most likely – a combination of all of the above, the needs of our students have shifted dramatically in recent years. This caused us to rethink how we offer services and ensure that we are providing students with the right type of support to succeed in our current world.


We have grown our programming to offer students more time to discover job opportunities and career pathways in Northeast Ohio and beyond through both College Now-specific programming and community-wide initiatives. We've also helped train other youth-serving professionals in their own similar work and have taken high school students across the country to expose them to new places experiences and educational opportunities.

Of course, despite all the successes of both our new and longstanding programming, as well as the community's support of educational access, there are still major challenges facing postsecondary education and every student's ability to access education past high school. As student debt mounts and costs continue to rise, not all are able to pursue postsecondary education the same way. We know this is a problem and our advocacy work this year has focused on issues related to both student and institutional debt, and you'll read in the following pages about our work to help students afford postsecondary education.

At the core of our work is the belief that education is a right for all students, and we will continue to work tirelessly to make sure our students have the necessary knowledge, opportunity, access and support to succeed in whatever they choose to do after high school. We thank you for your support in these efforts and your continued belief in the importance of our work.

In this time of continued transformation, education continues to be vital to the success of our students and our region, and we look forward to sharing the developments that are to come.

  
Michael Cogan  
Board Chair

  
Lee A. Friedman  
CEO



## Mission, Vision and Values

**College Now's mission** is to increase postsecondary educational attainment in Greater Cleveland through college and career access advising, financial aid counseling and scholarship and retention services.

**We envision** a future in which all members of our community have the support they need to successfully complete their postsecondary education, allowing them to lead more satisfying and productive lives and contribute to the region's economic vitality.

**We value** being student-focused; promoting equity and inclusion; inspiring dreams; teamwork; integrity; and quality in all that we do.

## Diversity Statement

**At College Now**, diversity, equity and inclusion are at the center of our mission. We are committed to empowering all students across Northeast Ohio to achieve their dreams. However, we acknowledge that the educational system in which we operate perpetuates inequality, and it is our goal to undo the forms of systemic oppression that face students of all ages. We believe that the opportunity to complete a postsecondary education should be available to everyone regardless of race, age, gender identity, religion, sexual orientation, physical or mental ability, ethnicity or income level.

We are committed to fostering a diverse, inclusive workplace that is representative of the communities and students we serve. We urge our staff to reflect on themselves and their departments through the lens of diversity, equity and inclusion. We encourage our staff to bring their full, authentic selves to work in ways that are considerate and affirming of all colleagues, clients and partners. We expect that staff will consistently challenge themselves and their colleagues to do better for both one another and our clients. By empowering our staff to feel comfortable engaging in respectful dialogue and sharing their experiences, we build a culture of compassion, innovation and creativity that makes us more effective in achieving our mission.

## Financial Results

### Operational Revenues

ENDING JULY 31, 2022

Foundations	<b>\$8,503,705</b>
Corporations	<b>\$3,208,592</b>
Individuals and Organizations	<b>\$797,172</b>
Government Grants	<b>\$6,995,683</b>
Say Yes Fiscal Administration	<b>\$7,653,306</b>
Fee for Service	<b>\$2,601,963</b>
Other	<b>\$130,304</b>

**TOTAL** **\$29,890,725**

### Operational Expenses


ENDING JULY 31, 2022

Advising and Counseling Services	<b>\$10,236,740</b>
Scholarship Awards	<b>\$7,508,638</b>
Scholarship and Retention Services	<b>\$2,118,228</b>
Say Yes Fiscal Administration	<b>\$7,653,306</b>
General Administration	<b>\$812,619</b>
Development	<b>\$911,758</b>

**TOTAL** **\$29,241,289**

College Now is a proud partner in the **Say Yes Cleveland** initiative, which provides wraparound services for Cleveland Metropolitan School District students and tuition gap-closing scholarships for eligible CMSD graduates. College Now administers the Say Yes Cleveland scholarship and also matches each recipient with a mentor.

**Say Yes Cleveland** is a scholarship program, with the goal of transforming the lives of CMSD's students and families for generations to come through its support.



## Education *is* Changing

Over the past year, conversations around education and the necessity for it beyond high school have grown louder, both in Northeast Ohio and nationwide. At College Now, we have worked to ensure that the students we serve have access to and an understanding of the opportunities available to them after high school graduation through new programs and initiatives and a steadfast commitment to our longstanding services.

Whenever they are offered, College Now applies for highly competitive federal grant opportunities available from the US Department of Education. In 2021, one such opportunity - the Educational Opportunity Centers (EOC) - was offered and College Now garnered two EOC grants to support adult programming in both Cleveland and Akron. The Akron grant was awarded in partnership with the Summit Education Initiative and the United Way of Summit and Medina. These EOC grants fund outreach efforts to adults interested in returning to postsecondary education.

To date, College Now has served over 1,300 adults through EOC outreach in Cleveland and Akron through efforts including targeted social media campaigns, canvassing and focused engagement through community partners. Additionally, the Akron EOC grant enabled College Now to open and operate

the Summit County Educational Opportunity HUB, which serves as a resource center for residents of Summit County and surrounding areas. As College Now expands our presence throughout Ohio, the EOC grants have helped to establish more solid footing in Summit County, allowing College Now to offer in-person services to residents looking to explore educational opportunities.

Beyond adult learners, this year College Now grew our offerings to middle and high school students through expanded out-of-school time programming in area high schools and recreation centers, providing students with college and career exploration activities, including postsecondary Career Technical (CTE) assistance, financial guidance, FAFSA (Free Application for Federal Student Aid) help and virtual college tours.

Our **impact!** program has grown this year, as well, as we received three new Nita M. Lowey 21st Century Community Learning Centers grants to fund three new **impact!** sites at Merrick House, Maple Heights High School, and the Cleveland Institute of Art – our first 21st Century

program to be offered on a college campus! This opportunity will be especially impactful for students as they can learn about postsecondary opportunities directly on site.

Students also have opportunities for in-person college tours through College Now's new Xplore program, funded by the Ohio Department of Education. Xplore provides students with academic enrichment through college and career readiness, exploration and research. Students in the program conduct research projects on a designated meta major, such as medical sciences, environmental science and communication, which also includes in-person exploration on college campuses and career sites. Xplore participants have already visited New York City and Chicago, and the funding also supports the possibility for international explorative trips, as well!

Since 1967, College Now has created new opportunities to serve students in the best ways possible. This year has been no different, and we are glad to continuously grow and adapt, bringing educational opportunities to all who need them.

# Education is Foundational



Just over a decade ago, the Cleveland Scholarship Program, which for 45 years helped Greater Clevelanders achieve their postsecondary goals, rebranded to College Now Greater Cleveland. It was a modern turning point for our organization on the heels of the hiring of CEO Lee Friedman and, while the core of our work did not change, it represented a renewed commitment to students across the region to help them graduate and succeed.

Following the rebranding, a variety of new initiatives were created to help students at a deeper level. Many of those initiatives and programs are still in place today, and we're excited to share ten years of progress in this year's report.

## College Now Mentoring Program

The College Now Mentoring Program launched in 2011 to provide a needed extra layer of support to scholarship recipients. A large portion of our scholarship recipients are the first in their families to go to college, and College Now provides mentors to help our students persist through to college graduation.

The Mentoring Program started with a cohort of 43 students and was fully scaled with the Class of 2016. Today, the program supports 1,700 total mentor/mentee pairs in the current school year. The number of students supported has decreased slightly over the past year, due largely to the COVID-19 pandemic and fewer students matriculating to postsecondary following graduation; however, the program's retention results remain steady.

Overall, results from the College Now Mentoring Program are more than 10% higher than the national average in both retention and graduation – graduation rates are significantly higher than students who, like ours, received the federal Pell grant.

The Mentoring Program has been one of the most successful initiatives started by College Now, consistently succeeding in our mission to propel scholarship recipients to degree attainment. Not only does the program provide support during a student's college years, it also provides the many first generation students with much-needed social capital and access to career opportunities and exposure. We are excited to continue supporting future students through the Mentoring Program for years to come!

To learn more and become a mentor, visit [cngc.org/mentor](http://cngc.org/mentor).

### PERSISTENCE

**90%**  
Average persistence rate of students in the Mentoring Program since 2011

**75%**  
National average persistence rate

### GRADUATION RATE

**71%**  
Average graduation rate of students in the Mentoring Program for the last three cohorts

**62%**  
National average six-year grad rate

**45%**  
National average six-year grad rate for students receiving the Pell grant

### MENTEES SERVED

43 ♦ 187 ♦ 476 ♦ 485 ♦ 739 ♦ 992 ♦ 1,121 ♦ 1,088 ♦ 1,490 ♦ 1,671 ♦ 1,560  
2011-2012 2012-13 2013-14 2014-15 2015-16 2016-17 2017-18 2018-19 2019-20 2020-21 2021-22

## Higher Education Compact of Greater Cleveland

In 2010, then-Cleveland Mayor Frank G. Jackson brought together over 70 partners from across sectors to form the Higher Education Compact of Greater Cleveland, a collective effort to support the college readiness, access and persistence of Cleveland Metropolitan School District graduates. Compact staff works closely with community partners and higher education institutions, including College Now (which also serves as the fiscal agent for the Compact and provides loaned staff to support Compact efforts), to put programs and retention efforts in place to keep CMSD graduates on the path to college completion.

The Compact has helped increase these areas for CMSD graduates in major ways, though COVID has impacted results in recent years with fewer students matriculating to postsecondary education. However, CMSD students are still graduating at a higher rate than they were pre-pandemic and are completing college at the highest rate since the Compact began.

To view CMSD student readiness, access and persistence data, go to [highereducationcompact.org](http://highereducationcompact.org).

## Cleveland Foundation College Now Scholars Program

The Cleveland Foundation College Now Scholars Program seeks to provide individualized and intensive support to CMSD's top academically performing students. This support aims to prevent undermatching, a trend in which well-qualified graduates from low-income backgrounds are not matched with competitive colleges and universities.

Developed in 2013 with the Cleveland Foundation, the program helps first-generation college students and/or students from low-income backgrounds understand the many opportunities available to them after high school. The program originally focused on CMSD's top 50 highest-achieving seniors, though it now does not have a limit to the number of students who can participate.

As part of the program, students can take a college exposure trip annually where they visit several college campuses and attend cultural and career-focused events. This past year, students traveled throughout New York and visited Niagara University, Rochester Institute of Technology, Syracuse

University, Ithaca College, New York University and the Fashion Institute of Technology. They also visited landmarks including Niagara Falls, Times Square, the Statue of Liberty, and attended a live broadcast of *The Today Show*!

In the years the program has operated, students have enrolled in institutions such as Harvard, Yale, Massachusetts Institute of Technology, Case Western Reserve University, Columbia and more with the support of College Now's advising team. Students have also received institutional full-ride scholarships and other highly selective scholarships to make their education affordable.

College Now is extremely grateful to the Cleveland Foundation for its support in developing and funding the Cleveland Foundation College Now Scholars Program and for helping the highest-achieving CMSD students receive the exposure and support they need to make their best-fit postsecondary decisions.



## Education is A Right

**A**t College Now, we believe that the ability to pursue a postsecondary education is a right to which all students should have access. However, one of, if not the, biggest barrier to accessing postsecondary education is affordability, with many students having to take out student loans in order to finance their degrees. The massive amounts of debt that students rack up during their postsecondary years can have an impact reaching far beyond graduation, with many students paying back their loans over 20 or 30 years. Being saddled with this extensive debt can prevent borrowers from making other major purchases, such as a house or car, until student debt is paid down while also struggling to afford the large monthly student loan payments.

Student debt and financial hardship don't just impact people who have completed their degrees; unmet and often unexpected financial needs many low-income students face in their final years of college can create an insurmountable hurdle to degree or credential attainment. Without support, students may be forced to stop their degree programs prior to graduation, leaving them not only with debt owed to the government or their institution, but also with no degree or credential to show for it.

College Now has taken an active role in student loan debt discussions and has helped many students work toward loan repayment and forgiveness under guidance from the College Now Resource Center. One borrower, Maria, worked with the organization to receive student loan debt forgiveness under the expanded Public Service Loan Forgiveness program,

**More than half of college students leave school with student loan debt. The total amount of debt owed in the United States is \$1.75 trillion (including federal and private loans) and the average borrower owes \$28,950.**

**Since College Now began assisting individuals with student loan repayment and consolidation through our Student Loan Rescue Program eight years ago, we have saved over 2,000 individuals more than \$173.6 million in future loan repayment.**

which was announced by the U.S. Department of Education in 2021 and provided borrowers with a limited-time credit for payments made on loans that wouldn't normally qualify for PSLF.

A social worker and graduate of Cleveland State University, Maria had hundreds of thousands of dollars' worth of student loan debt that was preventing her from being able to retire – she needed to earn an income to make her monthly payments. Under the expanded PSLF program, however, Maria received confirmation that she had made the required 120 payments needed in order to have over \$200,000 in loans forgiven! With that burden of debt lifted, Maria is now able to move forward in life and plan for her retirement.

Beyond the support that College Now provides individuals through the Resource Center, we also work with the greater community to support students' financial needs. College Now is a partner organization for the Cuyahoga County Completion Scholarship Program, an effort funded by Cuyahoga County to help keep students enrolled as they near completion of their bachelor's degree (students must have earned at least 60 credit hours of postsecondary

education to be eligible). Cuyahoga County asked College Now to work with higher education institutions to identify eligible students to whom supplemental completion scholarships can be awarded through the program; these completion scholarships may cover a balance on a students' college account or, in some cases, may be applied to additional expenses, such as living costs or books.

Additionally, College Now and Cuyahoga County have also partnered on a debt forgiveness program for county residents with minimal levels of institutional debt. Institutional debt — or debt owed to a college or university that has not been paid — causes student transcripts to be withheld, which prevents students from continuing their education at their current school or transferring to a different institution. The county program provides eligible Cuyahoga County residents up to \$2,000 to return to school to finish their degrees without being held back by institutional debt.

College Now is grateful to Cuyahoga County for its partnership and support of county residents through these programs, including County Executive **Chris Ronayne**; former County Executive **Armond Budish**; and **Cuyahoga County Council**, including council president **Pernel Jones Jr.** and **Sunny Simon**, chair of the Education, Environment and Sustainability Committee.

At a statewide level, College Now is also partnering with Ithaka S+R on the Ohio College Comeback Compact, in affiliation with the Ohio Department of Higher Education. A collaboration between eight Ohio public universities and community colleges, the Ohio College Comeback Compact helps students settle debt owed to a previous college or university.

Through the Comeback Compact, participating institutions will settle debt and release transcripts for students to re-enroll at any participating college or university, opening the door to new opportunities.

College Now is working closely with the Higher Education Compact of Greater Cleveland on these initiatives to support students' persistence in postsecondary education through financial support. As the cost of education continues to increase, it is vital that students have opportunities to make their postsecondary education achievable and affordable.

*Financial support for postsecondary education is constantly at risk, both locally and nationally. If you're interested in supporting College Now's advocacy efforts, please contact Kittie Warshawsky at [kwarshawsky@collegenowgc.org](mailto:kwarshawsky@collegenowgc.org) for more information.*

# Education is A Pathway

**W**hen the College Now team helps a student plan for life after high school, it is more than just determining where that student is going to college – we are helping that student think about their ultimate goals and how their postsecondary path can lead them to a career and a living wage. We’ve learned, though, that this work cannot be done in a silo. Support from other educational organizations and the philanthropic and business communities is imperative to help students understand the career fields available to them and provide them with the knowledge and support they need to achieve their goals.

Over the past few years, College Now has been involved in community initiatives designed to build this very kind of holistic support and network to help students discover and explore career pathways. This has included serving as a founder of the Planning and Career Exploration (PACE) initiative in the Cleveland Metropolitan School District, as well as the Greater Cleveland Career Consortium (GCCC) in the broader community. This work would not be possible without the support of **Mayor Justin Bibb**, his administration, and **Cleveland City Council**, including council president and current College Now board member **Blaine Griffin**.

Understanding that connecting students to employment and career exposure opportunities is necessary to helping them develop and succeed, it is also important to help the greater community understand how to support students in these endeavors. College Now developed the Center on Education to Career Advising (CECA), a program aimed at employers and adults working with young people, offering them techniques to help students plan for their futures, with particular emphasis on serving students from racial and ethnic minority groups and/or those who have experienced economic disadvantages. It also helps these professionals understand how best to coach students to set and achieve aspirational goals and, ultimately, encourages employers and the community

## About Planning and Career Exploration

Launched in CMSD in 2021, PACE is embedded into CMSD’s 6th- to 12th-grade curricula to help students gain knowledge, skills and experiences for careers they wish to pursue. The ultimate objective of PACE is for students to graduate from high school with a specific career plan and a pathway for how to realize that plan, which can include goals to complete college, career training or another form of postsecondary education.

College Now is one of six core partners in the PACE initiative, along with Neighborhood Leadership Institute (True2U), Junior Achievement of Greater Cleveland, Youth Opportunities Unlimited (Y.O.U.), Greater Cleveland Partnership and The Fund for Our Economic Future.

## About the Greater Cleveland Career Consortium

The GCCC, launched in 2022, supports students across the region by partnering with school districts to provide students with self-awareness and career-based learning opportunities. The initiative also connects employers and students to help build the regional workforce and to encourage students to plan for their career paths.

to provide students with opportunities to learn about career opportunities in the region and the educational pathways needed to get there.

The work of CECA began in the 2021-2022 academic year, with more than 400 youth-facing adult professionals, including the College Now team, CMSD staff and regional facilitators and employers receiving training. More than 200 are expected to receive or begin training this school year.

Although CECA has only just launched, it has already garnered attention for its potential to make a difference. In 2022, College Now received that Deborah Vesy Systems Change Champion Award from the Deaconess Foundation. The award, which recognizes the commitment of the foundation’s former longtime president and CEO (and College Now board member) **Deborah Vesy**, celebrates organizations who are committed to changing systems and honoring the type of work Vesy championed during her time as CEO. As the 2022 award recipient, College Now received an unrestricted \$50,000 grant from the Deaconess Foundation.

College Now is honored to have received this recognition from the Deaconess Foundation for our work to ensure all students in Northeast Ohio graduate from high school with a vision for their futures, supported by our community and with an understanding of how they can make a difference in our region. We look forward to continuing this important work with our community partners and watching the impact these commitments will have in the years to come.

# Education is A Catalyst

A guiding belief of our work at College Now is to build a culture of compassion, innovation and creativity that makes us more effective in achieving our mission. A large part of building that culture is to make sure that our staff and other individuals who work directly with our students—such as our mentors—understand them and their experiences.

A major way to ensure that understanding is in place is to have staff members and mentors on board who were once College Now scholarship recipients themselves! These individuals have first-hand knowledge of both our high school and postsecondary programs, and can identify with what our current students are experiencing during their postsecondary journeys. This understanding helps our team be more compassionate and understanding of our students' situations, challenges and successes over the course of their educational journeys.

Here are a few profiles of former scholarship recipients who are now engaged with College Now and serving our students in some capacity.

## Mentee-turned-Mentor Unique Willis Norris

### Postsecondary Institution Attended

The Ohio State University

**Degrees:** BS, Biology; BS, Mathematics ('17)

### High School Attended

John Hay Early College ('13)

### What are you doing now?

Currently in medical school at Ohio University Heritage College of Osteopathic Medicine with an interest in cardiology or radiology

**What was your experience like in the College Now Mentoring Program?** My College Now mentor was relatable and helped set the foundation for what to expect. I was a first-generation college student and didn't have people who knew what I was headed into; they were supportive but didn't know what I should expect because they had never experienced college or didn't know other people who had. My mentor set the stage for what I could expect, which was the most important thing for me – going into something unknown was a little scary!

**What made you want to become a mentor yourself?** I wanted to give back and facilitate the same things that were provided to me in the program, to be a resource in whatever way my mentee needs. Even if it is just sharing small, key, need-to-know things, you don't know what you don't know. I want to give back to other students coming out of the Cleveland Metropolitan School District, because students still need assistance after they graduate!



## Mentee-turned-Mentor Jeremy Suwarna

### Postsecondary Institution Attended

Cleveland State University

**Degree:** BS, Health Science ('20)

### High School Attended

John Hay Early College ('18)

### What are you doing now?

Clinical research coordinator at Cleveland Clinic

**What was your experience like in the College Now Mentoring Program?** My mentor was an electrical engineer and I was a health science major. He really helped me figure out what I wanted to do by sharing with me how he discovered his own career pathway. My mentor talked to me about his career path and guided me to find a niche or hobby that I enjoy—outside of academic subjects—that could help shape my career path and helped me figure out what I liked and how I could move that into a career.

**Why did you want to join the program as a mentor yourself?** I wanted to get involved with the program to help a student who was experiencing college in the same way I did. School has changed, learning has changed—and opportunities have changed over the years. I have resources and information that I can provide my mentee having just been through the college experience myself. I can say, "Here is what worked for me, here are some tips that I just used that really helped," because I just went through the same situations myself.



## Say Yes Success Coach and Former Scholarship Recipient Sherri Parks

### Postsecondary Institutions Attended

Kent State University and Tiffin University

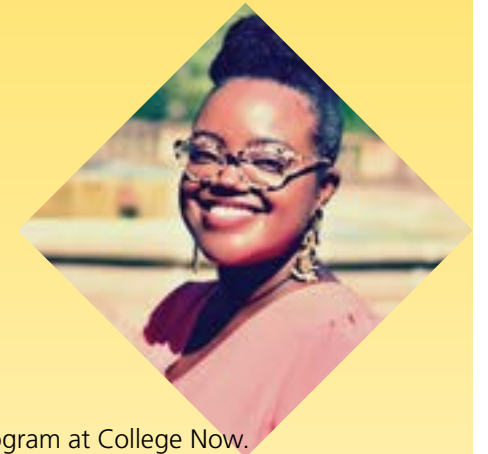
**Degrees:** BA, Psychology ('09); M.Ed., Higher Education Administration ('15)

### High School Attended

South High School ('04)

**What made you interested in employment with College Now after receiving a College Now scholarship?** After college, I became aware of the AmeriCorps program at College Now. When I thought about my educational journey, I realized how the scholarships I received directly impacted my ability to be the first in my family to graduate from college. I wanted to help equip other first-gen, low-income and/or underrepresented students with the knowledge and resources they would need to pursue and accomplish their goals. After leaving the organization to work in higher education, I returned to College Now in 2019 [through the Say Yes Success Coach program at Cuyahoga Community College] because its mission aligns the most with what I endeavor to do professionally in my community.

**Why is it important for College Now to employ staff members who received College Now services themselves?** It shows that this work is effective, vitally important, and not in vain. It gives students hope to hang their hats on. They can see that, despite what can seem like insurmountable odds in the present, they can change or carry on a great legacy of achievement.





## Education *is* Philanthropic

**\$464,000+**  
netted from Bags & Bourbon

**O**n April 28, 2022, College Now hosted another out-of-this-world fundraiser at the Great Lakes Science Center, netting over \$464,000 for our Mentoring Program. Thanks to the leadership of current College Now board member **Veena Khanna**, regional executive, Northeast Ohio and Central region, Key Private Bank; and **Trina Evans**, KeyBank chief of staff and director of corporate center, our biannual fundraiser was supported by exclusive title sponsor **KeyBank**. Formerly called the Bag Lady Event, this year ushered in a new era of the signature fundraiser, now known as Bags & Bourbon.

The 2022 Bags & Bourbon was an outstanding success, hosting more than 600 attendees in the Science Center's NASA Glenn Exhibit Hall for an evening of luxury handbags, accessories, unique experiences and bourbon bidding. Co-chairs **Suzanne Aral-Boutros** and **Angie Spitalieri Ianiro** helped create a memorable evening that included not only gorgeous displays of auction items, but also a Bags & Bourbon balloon display, a bourbon trail around the event venue and a separate room dedicated to bourbon tasting and cigar rolling. This year's auction items were also some of the most outstanding to date, with the highest-end items and bags, including a KeyBank Red Bag, a Gucci Dionysus and a Rolex watch on display at the event's entrance in a beautiful custom display provided by Nordstrom raffle sponsors **Stephanie and Juan Antunez**, owners of **California Closets**.

Attendees heard from College Now Board Chair **Mike Cogan**, CEO Lee Friedman and event co-chairs before the evening concluded, each of whom emphasized the importance of this event to the Mentoring Program and the students we serve.

First hosted in 2013, the inaugural Bag Lady Luncheon was inspired by a similar event in Palm Beach, Florida, at which attendees bid on handbags to benefit a common cause. College Now adopted the concept and collected a variety of new and used designer handbags that attendees could bid on electronically during a lunch event. That first event raised over \$160,000 for the College Now Mentoring Program, surpassing the ambitious objectives of **Judi Embrescia** and **Sally Stewart**, the first co-chairs of the event.

In the years since, the silent auction event has only continued to grow and raise more dollars to support the College Now Mentoring Program, which relies significantly on the money raised from this event.

*Thank you to all who attended and supported Bags & Bourbon in 2022, and we look forward to welcoming you back in 2024!*



# College Now 2022 Donors

This list reflects gifts, payments and multi-year pledges for the calendar year 2022. We have made every effort to ensure the completeness and accuracy of this report. If an error or omission has occurred, please accept our sincere apologies.

## \$1,000,000 AND ABOVE

The Cleveland Foundation  
Cuyahoga County  
Ohio Department of Education  
Ohio Department of Higher Education  
Say Yes Cleveland Scholarship Board, Inc.  
Serve Ohio  
U.S. Department of Education

## \$500,000-\$999,999

The George Gund Foundation  
The John Huntington Fund for Education  
KeyBank

## \$250,000-\$499,999

Nordson Corporation Foundation  
Ohio Machinery Education and Opportunity Foundation  
Swagelok Company  
Jane D. White Fund No. 2

## \$100,000-\$249,999

Barberton Community Foundation  
City of Cleveland  
Deaconess Foundation  
ECMC Foundation  
I Know I Can  
The Fred A. Lennon Charitable Trust  
Arthur P. and Ruth H. Moebius Scholarship Fund  
One Candle Foundation  
Pipefitters Local 120  
Estate of John L. Power  
Gladys Sessler Charitable Trust

## \$50,000-\$99,999

Anonymous  
Jack W. & Shirley Berger Fund of the Jewish Federation  
Carolyn E. Gordon Teachers' Fund  
ITHAKA  
Martha Holden Jennings Foundation  
The Lincoln Electric Co.  
David & Inez Myers Foundation  
The Ratner Miller Shafran Foundation  
The Reuter Foundation  
Dr. Jack Rumbaugh Memorial Scholarship Fund  
The Fred E. Scholl College Now Scholarship Fund  
The Sherwin-Williams Corporation  
Starting Point  
Visible Voice Charitable Fund  
The George Garretson Wade Charitable Trust #2  
Westfield Insurance Foundation

## \$25,000-\$49,999

Anonymous  
ACE Mentor Program of Cleveland  
ALCOA Fund of the Cleveland Foundation  
Bank of America  
The Bruening Foundation  
Margaret A. Cargill Foundation  
Cleveland Browns Foundation  
Deloitte  
The Vince Federico Memorial Fund II  
Harvard Business School Club of Northeastern Ohio  
Margaret A. Kennedy and Robert Paul  
The Community Foundation of Lorain County  
Lowenthal Family Fund  
Maltz Museum of Jewish Heritage  
The McKinney Family Fund  
Medical Mutual of Ohio  
New Venture Fund  
PNC  
PwC  
Anna M. Roth Fund  
The Kelvin and Eleanor Smith Foundation  
The Swamy Family Foundation  
Third Federal Savings & Loan  
Truist Foundation  
The Cydney Weingart Fund  
The Thomas H. White Foundation

## \$10,000-\$24,999

Anonymous  
The Abington Foundation  
Dan Abrams and Nan Cohen  
Stephanie and Juan Antunez  
AT&T  
Richard I. and Sharon Berger  
Leonard A. and Helen Russell Bretschneider Scholarship Fund  
California Closets  
Capital One  
Karen J. Carcione  
Case Western Reserve University  
Cleveland Women's City Club Foundation  
Scholarship Fund  
Cleveland Beer Week, Inc.  
The George W. Codrington Charitable Foundation  
Steve Conforti  
Covia Aspire Scholarship Fund  
Colleen M. Craven  
Robert and Jennifer DiGeronimo  
Katinka Domotorffy and Benjamin Sprenger  
Eaton Corporation  
Judith and Thomas J. Embrescia  
EY  
Lauren Rich Fine

The Sam J. Frankino Foundation  
Patricia Gaul  
The Gail & Sheldon Goodman Family Foundation  
Patricia M. Inglis  
The Miriam Kerruish Stage Fund  
Kiwanis Foundation of Cleveland, Inc.  
Alan and Susie Kopit  
Laborers Union - Local 894  
The Lozick Family Foundation  
Toby and Melanie Maloney  
Jack, Joseph and Morton Mandel Foundation  
Justin and Matt Manley  
The Manufacturing Sector Partnership Scholars Program  
MCPC  
MetLife Legal Plans, Inc.  
The Northwest Emergency Team Fund  
The NRP Group  
Patrick and Deborah Osysko  
The Perkins Charitable Foundation  
Perlman Foundation PK Management Employee Scholarship Fund  
Preformed Line Products Co.  
The Read Family Fund  
RPM International, Inc.  
Christina Sunga Ryook Foundation  
Mark and Shelly Saltzman  
Joseph D. and Catherine Sullivan  
Marcus Thomas Legacy Education Fund  
Jerry Sue Thornton  
The Denmark Tibbs Family Foundation  
The Treu-Mart Fund  
U.S. Bank Foundation  
Union Home Mortgage Foundation  
UnitedHealth Group  
The Velvet Case Fund  
William M. Weiss Foundation  
Dan & Ellen Zelman Family Foundation  
Anna L. Zverina\*

## \$5,000-\$9,999

Charlotte Alexander Fund  
Suzanne and Akram Boutros  
Kamla Bafna Charitable Foundation  
Joshua and Stephanie Bagshaw  
William and Jane Baldwin  
Benesch, Friedlander, Coplan & Aronoff LLP  
April Miller Boise and David Willbrand  
Byrne - Rubin Family Trust  
M.E. & F.J. Callahan Foundation  
Cargill Incorporated  
Harry and Mary Ann Carlson  
CBIZ Inc.  
Cleveland Cavaliers  
Cleveland's Future Engineers  
Scholarship Fund

Luke Edmund Cox Fund  
The Sally H. and Pitt A. Curtiss Charitable Fund  
Alzada Singleton Davis Fund  
Steve and Dana Demetriou  
Dominion Foundation  
Renee Drefahl Spirit of Life Scholarship Fund  
The Vince Federico Memorial Fund  
Thomas J. and Barbara A. Ferkovic  
FirstEnergy Foundation  
Fortress SRM  
Ashley and Scott George  
The Giant Eagle Foundation  
Michael W. Gleespen  
Gary Gross  
Shane Hollett  
Timothy Allen Hopkins Memorial Scholarship Fund  
Huntington National Bank  
Intown Club Legacy Fund  
Bernard L. and Nancy Karr  
Charles and Joyce Kullik  
Lakewood Public Library  
The Lehman Family Gift Fund  
James A. MacCutcheon  
Jimmy A. Malone  
The Maynard Family Foundation  
Estate of Dorris C. Michalske  
A. Grace Lee Mims Vocal Scholarship Fund  
The Burton D. Morgan Foundation  
Ruth Burda Motzer Memorial Scholarship Fund  
Patrick S. and Amy Mullin  
The Murch Foundation  
Nissan of North Olmsted  
Northern Trust Bank  
Ohio Farmers Insurance  
Ohio Laborers Future Leaders of America Fund  
The O'Neill Brothers Foundation  
Parker Hannifin Corporation  
Peter E. and Julie A. Raskind  
Charles and Sally I. Rich  
Walter J. and Janice A.\* Romansky  
Mark Ross  
Mark J. and Shelly L. Saltzman  
Say Yes Buffalo  
Fred Scholl Fund  
Scholnick Family Foundation  
The Sears-Swetland Foundation  
David and Deborah Stahler  
Ada Gates Stevens Memorial Fund  
TEGNA Foundation  
WC & EJ Thornton Foundation  
Tucker Ellis LLP  
Sue M. and Bill Tyler  
Elizabeth H. Warshawsky  
Mickey and Cheryl E. Weinstein  
Nora Wilder Charitable Trust  
John S. Wilson and Lawrence Li  
Yardi Systems, Inc.

## \$2,500-\$4,999

Apple Growth Partners  
Sam Arth  
Association of Asian Indian Women in Ohio Scholarship Fund  
Brian C. and Kristin Barren

Jules and Fran Belkin  
Donald H. Bullock and Catherine Kilbane  
Cleveland Guardians  
Cleveland Executive Consulting LLC  
Michael and Jennifer Cogan  
Thomas and Amy Dewey  
Christine & Guido DiGeronimo Foundation  
Ward and Colleen Dumm  
Fifth Third Bank  
R.L. Fortney Management, Inc.  
Fox Charitable Foundation  
Albert W. Geater Memorial Scholarship Fund  
Global Cleveland  
Richard Gross  
Robert E. and Ada Hagan Public Scholarship Fund  
Haskell Fund  
J3 Clothing Co.  
Lamont S. Johnson Scholarship Fund  
Robert D. Johnson Memorial Scholarship Fund  
Peter L. and Lisa Jones  
Stephanie Tubbs Jones Scholarship Fund  
Virginia Jones Memorial Fund  
John L. and Virginia Keiser  
Steven Kutnick and Jacquelyn Dorrow  
The Laub Foundation  
Legacy Village Lyndhurst Community Fund  
Marley Blue Lewis  
Julia S. Loeb  
Robert P. Madison Scholarship Fund  
Nancy W. McCann  
Diane O. McDaniel Scholarship Fund  
Rev. Dr. Marvin A. McMickle Scholarship Fund  
Megan L. Mehalko  
Neighborhood Leadership Institute  
John G. and Karen R. Nestor  
Evelyn B. Newell  
Nexstar Broadcasting Inc.  
Norhio Plumbing, Inc.  
Ohio Concrete Resurfacing, Inc.  
Derek Owens Memorial Scholarship Fund  
Roland S. Philip and Linda M. Sandhaus  
Rich and Sue Pohle  
Sam and Brenda Prentis  
Rockport Wealth LLC  
Todd and Shelley F. Rodman  
Enid and David Rosenberg  
Rotary Club of Cleveland  
Steven and Lydia Rzucidlo  
Richard F. and Elizabeth A. Schiferl  
Stacey Schroeder  
Lawrence M. and Sally Sears  
Sally and Terry Stewart  
John J. and Jean R. Sullivan  
Gregory A. and Suzanne Thaxton  
The Tri Vantage LLC Scholarship Fund  
Universal Windows  
USI Insurance Services, LLC  
Vocon Design, Inc.  
David Walters  
Charles D. Whitmer WSI Fund  
Felicia Williams  
Timothy and Sandy Wuliger  
Youth Opportunities Unlimited  
Adam and Brooke Zelwin

## \$1,000-\$2,499

Anonymous  
3 Enrollment  
Kristen Baird Adams and David Legeay  
Air Control Products, Inc.  
Rita Andolsen  
Ric and Kate Asbeck  
B. R. Knez Construction, Inc.  
Banks-Baldwin Foundation  
Kris Beck  
Michael Beedles  
Christopher and Tina Benavides  
Marc Bergsman  
Bruce and Katie Block  
Jon and Laura Bloomberg  
Boyd Family Scholarship Fund  
Robert and Paula Jo Boykin Family Foundation  
Stanley and Amy Brady  
Christopher Brandt and Beth Sersig  
Kathy Brooks Scholarship Fund  
Jeanette Grasselli Brown  
Gabe and Tracy Bruno  
Brent M. and Barb Buckley  
Roy W. and Wilma Cade Scholarship Fund  
Morena L. Carter  
Michael Chan and Brittany Williams  
Wilma A. Chapman Fund  
The Women's Civic Club of Cleveland Heights Scholarship Fund  
Cleveland Clinic  
Michele L. Connell  
Richard J. and Michelle B. Creger  
Jean Cross and Sarah Wieland  
Robert R. & Gay C. Cull Family Foundation  
lynze Cummins  
William W. Cushwa  
Manohar L. and Chandra K. Daga  
John Davies  
Craig Duber  
Robert and Sarah Durham  
FBI NAA, Inc.  
Umberto and Maryellen Fedeli  
Steven M. and Mary W. Feldman  
Thomas J. Flory  
Fount  
Lee A. Friedman and Joe Gogol  
Richard and Robin Garcia  
James R. and Laura Geuther  
Scott and Susan Gill  
Barbara Ginn



**31,000**  
Individuals served by  
College Now annually

Goodman Real Estate Services Group  
 Florence S. Goodman  
 Carolyn E. Gordon  
 Greater Cleveland Partnership  
 Michele Hamilton  
 Charles and Kathie Hardin  
 Harvey High School Scholarship Fund  
 Michelle Hillstrom  
 Michael J. and Jane Horvitz  
 Mary Hromyko  
 David and Dianne L. Hunt  
 Alishia Hussain  
 Anthony and Angie Spitalieri Ianiro  
 Improve Consulting and Training Group  
 Scholarship Fund  
 Judge Leo A. and Mrs. Gilberta Jackson  
 Justice and Integrity Fund  
 Reverend A. William Jamerson Memorial  
 Scholarship Fund  
 Dwight and Patricia Jordan Scholarship Fund  
 Iman Joshua  
 Douglas and Karen Katz  
 Charles Hildreth Kelso Scholarship Fund  
 Kathleen M. Kennedy and Doug White  
 R. Eric Kennedy  
 Ariane Kirkpatrick  
 Howard Kopit  
 Alton LaMaur Character Scholarship Fund  
 Bobby R. Larkin, Sr. Charitable  
 Association, Inc.  
 Mark and Susan Magyar  
 Richard and Jane Marcus  
 McNeil Scholarship Fund  
 James and Sharri Merz  
 Ann Miley  
 Roy Minoff  
 Mitchell's Ice Cream  
 Moen Incorporated  
 Beth E. Mooney  
 Joseph J. and Sheri Morford  
 Patti Morgenstern-Clarren  
 Nicholas E. and Linda B. Moscalink  
 Aditya and Jessica Naik  
 NBC II LLC  
 Daniel M. and Lori Nelson  
 Michael and Marcia Neundorfer  
 Elizabeth Newman and Marty McGann  
 Robert and Ann O'Brien  
 Ann-Marie Ogletree Child Development  
 Scholarship Fund  
 Oswald Companies

Painters of the Western Reserve  
 Laura Paszt  
 PayCom  
 Derrick and Kendall S. Perkins  
 Dalton Perry and Jasmine Boutros  
 James R. Pierce  
 Amy Pinkerton  
 Thomas Piraino and Barbara McWilliams  
 Progressive Corporation  
 Reminger Co., LPA  
 Madeline and J. Harlen Rife  
 Diana S. Riley  
 Ruth Alice Jacobs Roe Memorial  
 Scholarship Fund  
 Andrew and Lynn Rollins  
 Alan and Barbara Roskam  
 Donald J. and Kathleen Rynbrandt  
 James Saks  
 Charles Schaffner  
 Fareed and Laura Siddiq  
 Terry Speth Service Professional Memorial  
 Scholarship Fund  
 Sports & Scholars  
 Sean and Laurel Stack  
 The Helen F. Stolier and Louis Stolier  
 Family Foundation  
 James and Kathleen Szabo  
 Michele Scott Taylor and Douglas Taylor  
 Teamsters Local 407 Truck Drivers Union  
 Thompson Hine LLP  
 Mel Tinnick  
 Urban Squash Cleveland  
 Guhan Venkatu and Sara Millington  
 Deborah Vesy  
 Kittie D. Warshawsky and Timothy J. Tibbitts  
 Emily Waters Foundation  
 Andrew Watterson and Randy Lanoue  
 The S. K. Wellman Foundation  
 Jeff and Sari Whims  
 Lillian Louise Mayle White Memorial  
 Scholarship Fund  
 Christopher S. Williams and Cindy Mog  
 Willis Towers Watson  
 Alenka M. Winslett  
 Philip Woodcock and Virginia Benjamin  
 Raymond Yeh and Jasmine Aral  
 Amanda Yoho

**\$500-\$999**

Emily Adams  
 Margaret M. Amour  
 Richard and Sherry R. Aronson  
 Lindsay Baldy  
 Ann Barnett  
 Ian Barrett  
 Maureen Kennedy Berg Scholarship Fund  
 Michael Bohinc  
 Cynthia Emlen Boncella and Keith Anderle  
 Tess Boutros  
 Jonathan and Ellen Brown  
 Kenny Cahill  
 Gina Carlson  
 Lesley A. Carr  
 Jennifer Chess  
 Kathleen Cooke  
 Sarah Corrigan  
 Timothy J. and Kimberly Cosgrove  
 Stuart B. Crampton

Renee Csuhran  
 Eric O. Davis, Sr.  
 ElevateActual  
 John A. and Birdella I. Gaba  
 The Joseph and Joan Gaul Endowment Fund  
 Stephanie Gillespie  
 Matt Glickman and Susie Hwang  
 David and Brenda Goldberg  
 Cathy and Bill Graham  
 Kristen Gramajo  
 Jason Gray  
 Steve Greenberg  
 Charles and Jennifer Grossman  
 Barbara H. Gustafson  
 Jodi Hall  
 Jane Hamrle  
 Christine Herrick  
 Harry Houska  
 Anthony Jones  
 Joseph K. and Anne C. Juster  
 Amy E. Kellogg  
 Veena Khanna and Vinod Vemparala  
 Rick and Brenda Kirk  
 Rosanne Klonaris  
 Victoria Kresler  
 Robert D. Labes and Sheryl Markowitz  
 Jennifer Lambert  
 Da'na Langford  
 Barbara Lichstein  
 Frank and Lisa M. Malone  
 Patrick A. and Martha S. McGraw  
 Lynne and Cliff Megerian  
 Betsy Mercado  
 Anthony and Mary Ann Messina  
 Denise Miller  
 Paul C. and Kathryn W. Miller, Sr.  
 Scholarship Fund  
 Jerry Mizer  
 J. Paris Mosley Scholarship Foundation Fund  
 Tariq Naeem  
 Gary S. Nelson  
 Oatey Company  
 Lauren O'Byrne  
 Joyce Parker  
 Raju and Lisa Patel  
 Martha Patricof  
 Garth Paul  
 Paul and Kim Pesses  
 Alicia Petti  
 Jane Platten  
 Frank and Frances Porter Family Fund  
 Julianne Potter  
 Joan Radzyminski  
 Anne Reitzes  
 Curt and Sigrid Reynolds  
 Rhema Fellowship Church  
 John and Kathleen Rieter  
 Geraldo and Erica Rivera  
 Darnella Robertson  
 Catie Romanchek  
 Donald S. and Toni Scherzer  
 John D. and Barbara Schubert  
 Erin M. Shank  
 Adrienne Sims  
 Naomi G. and Edwin Z. Singer Family Fund  
 Jeremy and Emily Spivack  
 Howard A. and Terri Steindler  
 Alicia Stone

Teamsters Local Union No. 436  
 Terrace Construction Company, Inc.  
 Daniel J. W. Tibbitts  
 Michelle Tomallo  
 Jim and Jean Triner  
 Russell A. Trusso  
 Waterlox Coatings  
 Krissie Wells and Alex Nosse  
 George A. Wenz  
 Dickson L. and Ann T. Whitney  
 Danny R. and Lin Williams  
 Lisa Willoughby  
 Ron Wilson  
 Sonali Wilson  
 Brian Worsdall  
 John and Peg Zitzner  
 Thomas Zlatoper

**\$250-\$499**

Beth A. Adams  
 Alpha Omega Foundation Inc.  
 Martha Basile  
 Teresa Metcalf Beasley  
 Tom Bechtel  
 Bendix Commercial Vehicle Systems LLC  
 Cynthia A. Blouch  
 Shannon Boutros  
 A. D. Buchanan  
 Thelma Bugansky  
 Todd and Denise Bugansky  
 Stephanie and Jeff Bunsey  
 Elizabeth Burns  
 Michelle Byrne  
 Charles M. and Susan I. Caito  
 Michael Carbo  
 Matt Carroll and Laura E. Kleinman  
 Century 21 Depiero & Associates Inc.  
 Inajo Chappell  
 Cleveland Public Theatre  
 Sam Clyde  
 Brian and Julie Colaizzi  
 Mary Alice Conkey  
 Tom Corrigan and Diane Downing  
 Gary and Angela Desberg  
 Mary L. Devring  
 Henry C. Doll  
 Richard M. Donaldson  
 Mark and Fran Doris  
 Terrence Dziak  
 Anastasia Elder  
 Letcher C. Eley, II  
 Charles and Kirsten M. Ellenbogen  
 Matthew Embrescia  
 Irwin Epstein and Mary Lou Morella  
 Faulkner, Hoffman Phillips, LLC  
 Mike Fedeli  
 Ilene Frankel  
 Linda Frazier  
 Greg and Kathleen Freeh  
 Marilee Gaar  
 Anne M. Gates  
 Peter and Patricia Geise Family Foundation  
 Nancy C. Goldberg  
 Michelle Gross  
 Elizabeth Hackman  
 Susan Haffey  
 Kathryn Hall  
 Charles and Marcia Havens

Eleanor Hayes  
 John S. and Elaine M. Hibshman  
 Anthony Houser  
 Chlondra Hunter  
 Yvette M. Ittu  
 Barbara Kakiris  
 Remon and Nicole Kaldas  
 Randy Kammer  
 Charles H. King and Catherine Keating  
 Dorothy E. Klemm  
 Allison Knaggs  
 Samantha Kostoff  
 John and Theresa Kunkel  
 Brian M. Kus  
 Mary Ann Lamanna  
 Courtney Lehman  
 Isabel Levin  
 Nicole Liambeis  
 Elton Lytle and Kristen Galewood  
 Pamela Floyd Macer  
 Sue Maier  
 Adrian Maldonado and Associates, Inc.  
 Melissa Marshall  
 Marcia Marsteller  
 Mayfield Village Racquet Club  
 Julie Maynard  
 Bridget M. McFadden and Thomas Sylvester  
 Mary Anne McKay  
 Ben Meisenzahl  
 Terry Morgan  
 Marc and Amy Morgenstern  
 Warren L. and Betsi Morris  
 Pamela Morton  
 Gerald F. and Evelyn Newman  
 Dale and Barbara Nitzsche  
 North Eastern Ohio Education Association  
 Boyung Pahls  
 Jensen and Veronica Painter  
 Mary H. Partin  
 The Nelson G. Peck Jr. Memorial  
 Scholarship Fund  
 Vanetta Perry  
 Andrew Platt  
 Michael Pyslak  
 Lissy Rand  
 Christopher Riddle and Lauren Marchaza  
 Kaye Ridolfi  
 Jeff and Jamie Rindsberg  
 Ronald A. and Nannette M. Rock  
 Harlan Sands  
 Lori Saviers  
 George F. Schaefer  
 Mary Schmidt  
 Katharyn Schwab  
 Kelli Scott  
 Racheal Seibert  
 Lindsay Selick  
 John and Samantha Selio  
 Lauren Seymour  
 Binay Shah  
 James J. and Susan Spallino  
 Allen K. Stay  
 Sam and Susan Steinhouse  
 Lisa Stropki  
 Fred and Betsy Stueber  
 Aime Szymanski  
 Lawrence M. and Yolanda D. Tolson  
 Andrea Tracy



**7.5 million**  
 total amount of scholarships  
 distributed by College Now  
 to high school graduates and  
 adult learners last year

Verizon Foundation  
 Cheryl Forino Wahl  
 Samantha Wain  
 Jess Walpole  
 Anthony Warmuth  
 Kyle Warner  
 Mary C. Warren  
 Chris Westbrook  
 Brian Westowski and Melissa Lewis  
 Laurel Wilder and Zack Meisel  
 Deandra Williams-Lewis  
 Rick Younkin

**\$100-\$249**

Shaniqua Abed  
 Shama Abraham  
 Patricia A. Ackerman  
 Paula Alexander  
 Denise Ali  
 Laura Allen  
 Mark J. and Jennifer L. Altstadt  
 Anthony Anfuso and Mary Rakauskas  
 Curtis R. Arrington  
 Bryan Asmus  
 Jared J. Bacik  
 Cheryl Bailey  
 Timmaira and Garin Bailey  
 Don Banas  
 Anthony Bandera  
 Cathy Barber  
 Robert and Jamie Baskin  
 Carol Z. Battle  
 Jamie Belkin  
 David M. and Nancy Benacci  
 Bri Bengé  
 Brad Berelsman  
 Margaret Bernstein  
 Rick Bertone  
 Daniel and Dorothy Beyer  
 Gary and Diane Biesiadecki  
 Joseph Billups  
 Barb Birk  
 Michelle Blackford  
 Pamela Blemaster  
 Justine S. Blossom  
 Raymond Bobgan  
 Charles P. and Julia Bolton  
 Johnnie Booker  
 Gail Borkowski  
 David and Bernadette Bosak  
 The Boston Consulting Group, Inc  
 Jeffrey Bowen



**2,300**  
 high school graduates and  
 adult learners who received  
 scholarships last year



**94.5 million**  
total scholarship dollars  
distributed by College Now  
since inception in 1967

Elaine Breiner  
William Brickman  
Q'Nyah Britton  
Tylre M. Brock  
Barry Brooks  
Kaelyn Brown  
Eral Burks  
Rome and Stephanie Busa  
Amy Cain  
Carrie Carpenter  
Dennis Castiglione  
The Catholic Community of St. Gabriel  
Shelly Cayette-Weston  
Sunil and Cynthia Chand  
Cindy Chapman  
Fatina Chapman  
Lynn Charles  
Monique Chavers  
Dwayne Cheeks  
Thomasine Clark  
CLC Stokes Consultant Group  
Cleveland Grays  
Gregory Clifford  
Jennie Cogan  
Elizabeth Cohen  
Michael Colant  
R. Michael and Bonnie H. Cole  
Jennifer Collister  
Steve Combs  
Laura Corsi  
Celeste Cosentino  
Michael A. Costanzo  
Mary Anne Crampton  
Lynnette Crenshaw  
Judith Crippen  
Marianne Crosley  
Irene Crowell  
Seana Dailey  
Athena Daniels  
Michele Daniels  
Danny Boy's Pizza  
Brody and Elizabeth Day  
Cameron Dedrick and Julia N. Zettl  
Beverly S. Dempsey  
Cynthia Demsey  
John and Cynthia Dettelbach  
Jan Devereaux  
Tom Diamond  
Lajeana Dickson  
Jane Diemer  
James A. and Bonnie J. DiMarino  
Timothy R. and Stephanie W. Dorsey  
Michael Dunbar

Ed Duncan  
Nancy E. Dunn  
Susan Edwards  
Jitin G. Eidnani  
Lucinda Einhouse  
Phillip Elam  
Chastity Embrescia  
Megan Embrescia  
Jeff and Leah Epstein  
Roger Fairfax  
Bruce C. and Catherine Fallick  
Betsy J. Fallon  
Chris Fallon  
Michelle Fay  
Diana Fedeli  
Michael and Julie Ferkovic  
Helen Forbes Fields  
Kimyette Finley  
Henri E. Fletcher-Lockhart  
Marge Flint  
Jan Focke  
Charles D. and Charlotte Fowler  
Teresa Fowler  
Coty Franklin  
Patty Franklin  
Mary Ellen Fraser  
Adonis Fryer  
William L. Garrison and Mary Jo Mlakar  
Karmen Gary  
Pat Gary  
Sally Gehlfuss  
Mark Gersten  
Walter P. and Anne\* Ginn  
Allan Goldner  
Bernard D. and Susan Goodman  
Taylor M. Goodman  
Robert Grant  
Karla Greene  
Aldonis Grimes  
Ann Marie Gross  
Lisa Gross  
Lydia Gross  
John and Penny Grunden, Jr.  
Norman and Cheryl Gutmacher  
Maeve M. Hackman  
Cynthia Hale  
Gregory Hall  
Tonika L. Hammonds  
Ann Marie Hanna  
Michael Hanrahan  
Tom and Donna J. Harlan  
Valerie and William Harrell  
Dennis Harris  
Jason Harris and Bailey Capelle  
Samuel Harris  
April Hart  
Sheldon R. and Nancy W. Hartman  
Jarrod Hartzler  
LaPhia Heard  
Richard W. and Chelsie L. Heck  
Jackie Herringshaw  
Marilyn Hicar  
Eric and Janelle Hinkle  
Geoffrey Hoffman  
Ron D. Holman  
Mary Holmes  
Nancy Holt  
Elizabeth Honold

Charles Honton and Margaret Beck  
Stephanie Howse  
Adrienne Hubbards  
Nancy Huntsman  
Jennifer Hurd  
Denise Iacobacci  
Richard and C. Michelle Iafelice  
Infinium Wall Systems  
Jeffrey Isaacs  
Kristine Jackson  
Opher Jackson  
Corey and Jessie James  
Ceena R. Jewell  
Sue Johnson  
Christopher Johnston  
Emmitt R. Jolly  
Mia Jones  
Robert and Ann Marie Kaliszewski  
Robert and Linda M. Katz  
Kevin and Beth Kelley  
John Kellogg  
Susan Kent  
Penny Kenyon  
Carl D. and Carol H. Keske  
Jonathan Kilroy  
Emily King  
Berenice Kleiman  
Leslie Kleinman  
Donna M. Koler  
Judy Kontul  
Judith Kovach  
John Kovanda  
Kowalczyk Family Charitable Fund  
Jean Koznarek  
Elroy D. and Dee C. Kursh  
Ebony Lampkins  
Shirley S. Larabee  
Alberta Lee  
Tom and Betsy Leib  
James Leonard  
Stephen B. and Lillian Levine  
John Lisy  
Gregory Lockhart  
James G. Lubetkin  
Jeff Luken  
Nancy Lyon-Stadler  
Lawrence A. Mack  
Jenai Makulinski  
Shahzeb Malik  
Angela Malley  
Margie Maloney  
Mary Maloney  
Joseph Mannino  
Meghann Marnecheck  
David Mason  
Vandy Mathews  
Mark McCarthy  
Molly McFadden  
Jennifer McKeegan  
Susan Saunders McKenzie  
Michael Melampy  
Dina Melchiorre  
Clifford and Hannah B. Mendelsohn  
Leon Mengri  
George Michalke  
Caitie Milcinovic  
Clifford V. and Toni Miller  
Dale A. and Carol J. Miller

Peter Miller  
Lakisha Miller-Barclay  
Elaine Minch  
Wesley D. Mock  
Crystal Montgomery  
Kenneth Moore  
Michael J. and Petra P. Moran  
Lana Z. Moresky  
Glenn and Mae Morrical  
Malcolm X. Mosely  
Randall and Chris Myeroff  
Gloria Nance  
August A. and Joan Katz Napoli  
Narrative Digital Media LLC  
Peter Neal  
Deborah Neale  
David K. and Lori Neiswander  
Robert Nemer  
Phillip A. and Sonia Newmark  
Jennifer Nguyen  
Dustin and Jessica Nofel  
Traci Nolan  
Herman Noland  
Adam O'Brien  
Billy R. O'Neal  
Wayne Ostrosky  
Michael P. and Magdalen Osysko  
Katherine Ozan  
John Pangrac  
Suzanne Panichi  
William and Laura Paravano  
Judy Payne  
Sharr Pechac  
Jill Penrose  
Tracy Pesho  
Carol Phillips-Bey  
Alexander Phipps  
Jason Pokorny  
Dan A. Polster and Deborah A. Coleman  
Michael and Betsy Potiker  
Karen Prasser  
Monyka Price  
Nicole A. and Nathaniel Price  
Andrew W. and Leslie Prusinski  
Elizabeth Randau  
Richard J. Rapacz  
Kausar Razvi  
Mary Reynolds  
David and Beth Ricanti  
Jason Richardson  
Jan Ridgeway  
Anthony Rizzo  
Hannah Roberts  
Lisa A. Roberts-Mamone  
Carol Roe  
James Rokakis  
Jan Roller  
Robert and Mary Romansky  
Christopher and Natalie Ronayne  
Gloria Rose  
Timothy and Lisa Rose  
Debbie Ross  
Jonathan Rozycki  
William and Nancy Rutkowski  
Michael Ryan  
S&P Global Foundation  
Khemi Salahuddin  
Amir Saleem

Joel Saltzman  
Betsy K. Sampliner  
Malory Sanchez  
Robert J. Sandrick  
Sandra Sauder  
Brianna Sauerland  
Mike Schafer  
Curtis Scheck  
Steve Schecter and Elizabeth Dery  
Auxiliary to the David F. Schneider  
VFW Post 7035  
Kathleen Schroeder  
Paul Schroeder  
Schroeder Advisors & Leadership Coaching  
Dianne Schubeck  
Paul and Jenise Secunde  
Charles See  
Gary and Mary Ann Shamis  
Jane Buder Shapiro  
Helen Sheehan  
Andreana Shengelya  
Mark Shepard  
Thomas and Judith Shimko  
Joyce Shinn  
Angela Shute-Woodson  
Michael Siegal  
Joanne Siegla  
Jim Simler  
Robert and Donna Simoneau  
Andrew Singer  
Harry Singer and Geri M. Smith  
Kenneth Sislak  
Jakub Skodowski  
Robert and Debbie Slocum  
Alisa Smith  
Nancy K. Smith  
Roshonda Smith  
Robyn Minter Smyers  
Frank U. Sowell  
Haley Spangler-Mullen and Brandon Mullen  
Ed and Chann Spellman  
Jean Spinosi  
Terrence Spivey  
David Stalter  
Jill Stanley  
Starlight Financial Group LLC  
Joseph and Joyce Stayanchi  
Rachel Steinlage  
Jillian Sterley  
Melody Stewart  
Carter Strang  
William Stultz  
Mary Sutter  
Julian Sutton  
Joshua R. and Angela M. Swander  
Lorraine Szabo  
Ray Tarasuck  
Brian Taylor  
Christine Taylor  
Michael Taylor  
Teamsters Joint Council No. 41  
Amy Times  
Bobby Tinnon  
Ray and Terri Tintor  
TM Consults, LLC  
Shelley Tobias  
Dianne Treska  
TRG Water

Becky Truelson  
Howard J. and Sara Tucker  
Sandra Turner  
Tracy Turoff  
David J. Udelf  
Loree Vick  
Sladjana Vilimonovic  
Gerald S. and Phyllis Wahl  
Courtney and Nick Walsh  
Kathleen Walsh  
Joseph J. and Eileen M. Ward  
Sanford Watson  
Maria Weakland  
Valerie Weaver  
Thomas C. Weber  
Mary E. Weems  
Sue Weir  
Jay Westbrook and Helen Williams  
Vernita Whittenburg  
Wholesome Desi, LLC  
Lee Wilberschied  
Reginald A. and LaRon Wilkinson  
Alexander Williams  
Donald C. Williams  
Earl Williams  
Rita Williams  
Jim Wilson and Mimi Lord  
Angela Winborn  
Diane Wish  
Warren and Ruth Wolfson  
Ronald Woodford  
Walter and Anita Wozniak  
Angela DeBord Yahner  
Wilming F. Yee  
Kyle Yokiel  
John J. and Christine M. Yurik  
Sharon Zeszotek  
Robert Zimmerman  
Thomas Zung

**\$99 AND UNDER**

Anonymous  
John Abrams  
Margaret Adams  
Julie Allen  
Debra J. Andersen  
Sandra T. Andrews  
Dale R. Anglin  
Bianca and Marcus Arendas  
Dana Aritonovich  
Jonathan Ashton  
Frank Balass  
Christa Battle  
Heather Beasley

**2,800**  
average College Now  
scholarship amount awarded  
to high school graduates  
and adult learners

Peggy Beckerman  
 Marshall T. and Marilyn Bedol  
 Russell and Carolyn Beeler  
 Marissa L. Beller  
 Aaron M. and Peter M. Berger  
 Becky Betram  
 Patricia Bishop  
 Shannon Blaha  
 Caitlin Blake  
 Janella Blanchard  
 Antony Bonavita  
 Matthew Bosak  
 Adam Bouguerra  
 Mick Boyle  
 Anna Brandt  
 Deborah Bridwell  
 Thaddeus Brown  
 Charlotte C. Burgin  
 David Burke  
 Theresa A. Burrage  
 Anne Calabrese  
 Elisha Campbell  
 Maggie Cappello  
 Janet Carlo  
 Bruce Chambers  
 Gerard Chapek  
 Deborah L. Chapman  
 Alicia Ciacchi  
 Ryan Clement  
 Sydney Cook  
 Deirdre Corrigan  
 Anna Coulter  
 Victor Courtney  
 Charise Cox  
 Brittany Crawford  
 Cultivate Cares Inc.  
 Ashley Dacek  
 Melinda Dang  
 Erin Deimling  
 Michael Dielman  
 Luke DiMuzio  
 Scott and Elizabeth Donaldson  
 Christin Dornback  
 Joseph and Denise N. Dougher  
 Charles Downing  
 Courtney Dunn  
 Brandi DuVall  
 Vincent and Karen Eckdahl  
 Eric Eisentraut  
 Monroe and Marcia L. Elbrand  
 Ipek Ergonenc  
 Joy Evans  
 Crystal Farmer

Diane Farrell  
 Gerald and Mary Fasko  
 Heather Faust  
 Janet Flowers  
 Sheri Foster  
 Matthew H. and Erin Frank  
 Jasmine Freeman  
 Karen Friedman  
 Michael Gaeta  
 Vickie C. Gallagher  
 Richard Garnai  
 Mary Anne Garvey  
 Ronald Gehrlein  
 Pratibha Ghatage  
 Gita Gidwani  
 Gilbane Building Company  
 Saundra Gilchrist  
 Gary and Lois Goldwasser  
 Rozalyn Gordon  
 William L. and Jean C. Gordon  
 Mary Lou Gotman  
 Abigail D. Grafmeyer  
 Camille Graham  
 Jean A. Greene  
 Burt W. and Beatrice Griffin  
 Sarah Griffin  
 Kathryn Gross  
 Mary Groth  
 Maya Holtz Groys  
 Donna Gullett  
 LaRita Hand  
 Karen Harding  
 Jane Hargraft  
 Jeremy Harris  
 Brenda Haunty  
 Daveda Hawkins  
 Veronica Hawkins  
 Jennifer Hennessey  
 Steve Hirsh  
 Sheri Hoenig  
 Corrinne E. Horvath  
 Thomas and Shirley Huff  
 Brendon Hughes  
 Deanne Hurley  
 Sue Hustek  
 Jon Iannaco  
 Thomas and Andrea Iwan  
 Kaitlyn Jackson  
 Deanna Jarvis  
 Alison C. Joyce  
 Anastasia Kaluszyk  
 Steve Kammer  
 Libby Kannard and Bill Janesh  
 Joe Kenney  
 Christian and Kimberly Kenzig  
 Ace Key  
 Ann Klotz  
 Kendra Kneisl  
 Stephanie Kubec  
 Rebecca Lamb  
 Fanny Lang  
 Lyman D. and Joan Lawrence  
 Katerina Le  
 Ronald L. and Marylyn Leach  
 Madison Ledyard-King  
 Rosemary Leshar  
 Jo Levine  
 Antoine Ligon

Carl and Mary LoPresti  
 Dawn Magnasco  
 Kevin Maloney  
 Kumar Manoharan  
 Martin W. Manseau  
 Gregory A. and Shelley Marcus  
 Meredith Marinucci  
 Jonathan L. and Hannah M. Marshall  
 Andrea Martemus-Peters  
 Alejandro Martinez  
 Ronald and Marilyn McCoy  
 Annette Melda  
 Donald and Sally Messinger  
 Meya Miller  
 Andrea Mindell  
 Brittany Moore  
 Rachel Mowcomber  
 Adrienne Ferraro Mueller  
 Halle Musone  
 David Muzina  
 Cristina C. Nahra  
 Christina Nelson  
 Jeanne M. Newkirk  
 Charles L. and Ann G. Newman  
 Nancy Newman  
 Joseph Nimylowycz  
 Michael M. Niro  
 Jim and Jeane O'Donnell  
 Charles and Elaine Oreskovic  
 Ashleigh Owens  
 Theodore Palace  
 Suprangya Panda  
 Paul H. Pangrace  
 Melissa A. Parey  
 Patricia A. Patrick  
 Rachel Payne  
 Diana C. Pearson  
 Mark A. Phillips and Lita Gonzalez  
 Larry Pietro  
 Scott Pohlkamp  
 Elinor G. Polster  
 George Porter  
 Daniel Poslet  
 Michael and Loraine Potosky  
 Amanda Pratt  
 Ruby Pratt  
 Ariel Pruitt  
 Leanne Rahija  
 Julie Ramos  
 Todd Ratica  
 Adalee Ratycz  
 Amy and Daniel Rice  
 Mike and Miriam Rinaldi  
 Kelley D. Ringer  
 Dave Robar  
 Barbara S. Robinson\*  
 Marquita O. Rodgers  
 Joy Roller  
 Laura Rose  
 Zach Rossiter  
 Alice Roth  
 Kiesha Ruth  
 Twyla Sales  
 Lori Scheid  
 Michele Schrock  
 Thomas Sciuto  
 Christine M. Scullin  
 Lydia Shinn

Stanley E. and Marylyn B. Sibits  
 Stephanie Siegel  
 Diane Singer  
 Kumar Manoharan  
 Savannah Slusher  
 Angela Small  
 Vicki Smigelski  
 Michelle Smith  
 Jeffrey M. Solomon  
 Heidi Spangler  
 Stephanie and Jeffrey Spencer  
 Delisa M. Stacy  
 ShaPearl Stewart  
 Stacy Stickel  
 Larry and Judy Strah  
 Keith Sulzer  
 Synchrony  
 George M. and Julie A. Szeltner  
 David V. and Mary Tamburro  
 Dionne M. and Diana G. Thomas  
 Kathleen A. Thompson  
 Ryan and Linda E. Tirk  
 Tisbest Philanthropy  
 Jeff R. and Lori A. Townsend  
 Holly Trifiro  
 Astrid Umanzor  
 George and Charlene Ungvasky  
 Charles E. and Adrienne Van Dyke  
 Frank and Carol Vartorella  
 Aaron Vaughn  
 Keely Veatch  
 Michael Verda  
 Jessica R. Vitale  
 Joseph and Carol Vogel  
 Megan Walsh  
 Danielle Ward  
 De'Antae Ware  
 Jason Warner  
 Michelle Warner  
 Roger C. and Jane Warner  
 Jody White  
 Martha White  
 Eve Whitehorn  
 Richard and Kathleen Wickens  
 Marley A. Wilder  
 Carmella Williams  
 Kenneth Williamson  
 Melissa Crockett Willis  
 Bill Willoughby and Julie Sabroff  
 George Woidek and Gail Arnoff  
 Nancy Wood  
 Daniel C. and Ellen G. Worthington  
 Mykaela Wright  
 Daniel Zielinski  
 John and Donna Zitel

**IN HONOR OF**

**Gail Arnoff**

Alice Roth

**Hali Bridges**

Jane Hargraft

**Choolah - West 25th Opening**

Wholesome Desi, LLC

**Noel Culbreath**

Penny Kenyon

**Thomas Dewey**

Jennifer Collister

**Judith Embrescia**

Jules and Fran Belkin  
 David and Brenda Goldberg  
 Mark and Shelly Saltzman

**Lee A. Friedman**

Donald and Sally Messinger

**Sandy Huynh**

Gail Arnoff

**Margaret A. Kennedy**

Betsy J. Fallon

Deborah Glosserman

**Elroy D. and Dee C. Kursh**

Betsy K. Sampliner

**Julia S. Loeb**

Gary and Lois Goldwasser

**Jake and Emily Olszewski**

Denise N. Dougher

**Les and Esther Potash**

Linda M. Katz

**Sally I. Rich**

Marilyn Bedol

Charles E. and Adrienne

Van Dyke

**Stacey Schroeder**

Jim and Jean Triner

**Steven Solomon**

Jeffrey M. Solomon

**Howard Steindler**

Norman Gutmacher

**Daniel J.W. Tibbitts**

Michele Hamilton

**Kittie D. Warshawsky**

Julie Sabroff

**IN MEMORY OF**

**Robert Patrick Benko**

David A. Walters

**Gary Boncella**

Anonymous

Cathy Barber

Martha Basile

Carol Z. Battle

Gail Borkowski

Rome and Stephanie Busa

Gerard Chapek

Cleveland Grays

Jean Cross and Sarah Wieland

Nancy E. Dunn

ElevateActual

Faulkner, Hoffman Phillips, LLC

Lee A. Friedman and Joe Gogol

Mary Anne Garvey

Jeremy Harris

Samuel Harris

Charles and Marcia Havens

Susan Kent

John Kovanda

Mary Ann Lamanna

Kevin Maloney

Nancy Newman

Jim O'Donnell

Alexander Phipps

Thomas Piraino and Barbara McWilliams

Thomas Sciuto

Andrew Singer

Diane Singer

**90%** 

**first – to second-year average retention rate of College Now scholarship recipients, compared to the national average of 75% for all students**

Harry Singer and Geri M. Smith  
 George M. and Julie A. Szeltner  
 Teamsters Joint Council No. 41  
 Teamsters, Local 436  
 Terrace Construction Company, Inc.  
 Keely Veatch  
 Courtney and Nick Walsh  
 Kittie D. Warshawsky and  
 Timothy J. Tibbitts  
 Jody White  
 Laurel Wilder and Zack Meisel  
 Jim Wilson and Mimi Lord  
 Alenka M. Winslett  
**Ruth Breiner**  
 Elaine Briener  
**Robert C. Coplan**  
 Bernard D. Goodman  
**Ira James Cowen**  
 Julia S. Loeb

**Frances and Charles Feiner**  
 Steven Kutnick and Jacquelyn F. Derrrow  
 Todd and Shelley F. Rodman  
 Peter and Robin F. Winokur

**Robert Fortney**  
 Matthew H. Frank

**Prem Gidwani**  
 Gita Gidwani

**Robert M. Ginn**  
 Barbara Ginn

**David S. Inglis**  
 Allen Goldner  
 Patricia M. Inglis  
 Richard and Jane Inglis  
 Barbara Lichstein  
 Charles and Sally Inglis Rich  
 Emily Spivack

**Charles and Margaret Jones**  
 Shaker Heights Arts Council Board  
 of Directors

**Ralph Krogh**  
 Walter J. Romansky

**Hal LaPine**  
 Linda M. Katz

**Lawrence R. Loeb**  
 Nancy Huntsman

Julia S. Loeb  
 Mary LoPresti

**Dr. Clarence Mixon**  
 Carolyn Beeler



71%



**Average graduation rate for College Now scholarship recipients over the last three years, compared to the national average of 45% for students receiving the federal Pell grant**

**Sean P. Osysko**

Bryan Asmus  
Jared J. Bacik  
Gary and Diane Biesiadecki  
David and Bernadette Bosak  
Matthew Bosak  
William Brickman  
Century 21 Depiero & Associates Inc.  
Danny Boy's Pizza  
James A. and Bonnie J. DiMarino  
Scott and Susan Gill  
Richard W. and Chelsie L. Heck  
Marilyn Hicar  
Infinium Wall Systems  
Remon and Nicole Kaldas  
Donna M. Koler  
Anthony and Mary Ann Messina  
George Michalke  
Dustin and Jessica Nofel  
Patrick and Deborah Osysko  
Jensen and Veronica Painter  
Jason Pokorny  
Ronald A. and Nannette M. Rock  
William and Nancy Rutkowski  
Auxiliary to the David F. Schneider  
VFW Post 7035  
Kathleen Schroeder  
Schroeder Advisors & Leadership Coaching  
The Sherwin-Williams Corporation  
Starlight Financial Group LLC  
Joseph and Joyce Stayanchi  
Joshua R. Swander  
TM Consults LLC  
Jeff R. and Lori A. Townsend  
TRG Water  
Thomas C. Weber  
Martha White  
Walter and Anita Wozniak  
Christine M. Yurik  
Sharon Zeszotek  
**Janice A. Romansky**  
Thelma Bugansky  
Todd and Denise Bugansky  
Bruce Chambers  
Deborah L. Chapman  
Beverly S. Dempsey  
Gerald and Mary Fasko  
Ronald Gehrlein  
Jean A. Greene  
Michael Hanrahan  
Brenda Haunty

Harry Houska  
Thomas and Shirley Huff  
Robert and Ann Marie Kaliszewski  
Rosemary Leshner  
Elaine Minch  
Charles and Elaine Oreskovic  
William and Laura Paravano  
Robert and Mary Romansky  
Walter J. Romansky  
Thomas and Judith Shimko  
Stanley E. and Marylyn B. Sibits  
Larry and Judy Strah  
Dianne Treska  
George and Charlene Ungvarsky  
Frank and Carol Vartorella  
Joseph and Carol Vogel  
Michelle Warner  
Richard and Kathleen Wickens  
Donna Zitel

**Gerald Wahl**

Phyllis Wahl

**Kenneth A. Yuko**

North Eastern Ohio Education Association

**Anna L. Zverina**

Davey's Fund

**Matching Gift Companies and Organizations**

Bank of America  
The Boston Consulting Group, Inc  
Eaton Corporation  
Gilbane Building Company  
The John Huntington Fund for Education  
Moen Incorporated  
Nordson Corporation  
Northern Trust Bank  
Progressive Corporation  
S&P Global Foundation  
The Sherwin-Williams Corporation  
Synchrony  
TEGNA  
United Health Group  
Verizon  
Willis Towers Watson

**College Now would like to thank the following entities for their in-kind donations**

AlphaLit  
Barrell Craft Spirits, LLC  
Buffalo Trace Distillery  
Anne Cate  
California Closets  
Cleveland Browns  
Cleveland Cavaliers  
Cleveland Cigar and Social Lounge  
Cleveland Guardians  
The Cleveland Orchestra  
Cleveland Whiskey  
Cognizant  
Deloitte  
Diamonds Direct  
Evan Williams Distillery  
Extra Betty  
Fahrenheit

Fount  
Ghurka  
KeyBank  
Marcum LLP  
Medical Mutual of Ohio  
Mitchell's Ice Cream  
Ray Fogg Corporate Properties  
Blair Ritchey  
Runyon & Sons Roofing  
Salesforce, Inc.  
Western Reserve Distillers  
Westfield Insurance Corporation  
WKYC  
Xtend Technologies  
Zhug

**College Now would like to thank the following individuals for their in-kind donations**

Suzanne and Akram Boutros  
Judith and Thomas Embrescia  
Umberto and Maryellen Fedeli  
Lauren Rich Fine  
Patrick Grijak  
Angie Spitalieri Ianiro  
Janice M. Jones  
Douglas and Karen Katz  
Margaret A. Kennedy and Robert G. Paul  
Barbara Lichstein  
Jimmy A. Malone  
Megan L. Mehalko  
Beth Mooney  
Alexander Phipps  
Mark Ross  
Eileen Roth  
Sara Ellen Stashower  
Nancy Stickney  
Elaine Straub  
Nancy Wellener

**College Now is very appreciative of those individuals whose planned gifts will benefit future generations of students**

Estate of Dorris C. Michalske  
Estate of John L. Power

**College Now would like to thank the members of the Emerging Leaders for College and Career Access for their generous contributions of time and expertise**

Saja Abid  
Tosin Araba  
Lea Bastulli  
Karen Cross-Hatten  
Julie DeStefanis  
Hannah Downing  
Anastasia Elder  
Isis Harbour-Smith  
Abigail Hausman  
Adrienne Hubbard  
Kendra Kneisl  
Tremain D. Lasenby  
John H. McDermott

Taylor Molton  
Jackie Monhart  
Jennifer Nguyen  
Amy Rice  
Lena Richardson  
Michelle Romanowski  
Savannah Slusher  
Kristin Stuker  
Christine Taylor  
De'Antae Ware  
Brittany Williams

**College Now would like to thank the members of the Professional Advisory Council for their generous contributions of time and expertise**

Charles F. Adler, *Schneider Smeltz Spieth Bell*  
Ronald S. Ambrogio, *BNY Mellon*  
Stephanie Antunez, *California Closets*  
Brian C. Barren, *Cleveland Guardians*  
Rebecca L. Bar-Shain, *Cedar Brook Group*  
Edward J. Baugh, Jr., *Cleveland Guardians*  
Robin L. Baum, *Zinner & Co.*  
John Beer, *PNC Wealth Management*  
Nicole Bornhorst, *Huntington Private Bank*  
Don P. Brown, *Attorney (Private Practice)*  
Leigh H. Carter, *Glenmede*  
William Caster, *Fifth Third*  
Michael Cogan, *Northern Trust*  
Joseph Compton, *Marcum LLP*  
Greg Cowan, *AllianceBernstein*  
Lynnette Crenshaw, *KeyBank*  
Dana DeCapite, *Hahn Loeser + Parks*  
Elaine Eisner, *Eisner Gohn Group*  
Christina Evans, *Hahn Loeser + Parks*  
Lauren Rich Fine, *Gries Financial*  
James R. Geuther, *Truist*  
Lynn-Ann Gries, *Gries Consulting*  
Barbara Janovitz, *Reminger Co., LPA*  
Michael Jeans, *Growth Opportunities*  
Matthew Kadish, *Frantz Ward*  
Kimon Karas, *McCarthy, Lebit*  
Veena Khanna, *Key Private Bank*  
Vanessa Mavec King, *Ancora*  
Woods King, IV, *AMEND Consulting*  
David Legeay, *Glenmede*  
Cassandra Manna, *Brennan Manna & Diamond*  
Erica McGregor, *Tucker Ellis LLP*  
Ellen Meehan, *Squire Patton Boggs*  
Joseph M. Mentrek, *Calfee, Halter, and Griswold LLP*  
Michael Novak, *Wellspring Financial*  
Samuel Prentis, *Bank of America*  
Susan L. Racey, *Tucker Ellis LLP*  
David Reynolds, *Key Private Bank*  
Lisa A. Roberts-Mamone, *Baker Hostetler*  
Mark Ross, *PwC (Retired)*  
Jennifer A. Savage, *Schneider Smeltz Spieth Bell*  
Brad Schlang, *Eton Financial Services*  
Fareed Siddiq, *Merrill Lynch*  
Mike Toth, *Westfield Bank*  
Jeffrey M. Wasserman, *Oswald Life Insurance*  
Katherine Wensink, *McDonald Hopkins*

**College Now is grateful to these longstanding donors whose sustained commitment to educational attainment is both inspiring and impactful**

**25+ YEARS TOTAL GIVING**

AT&T  
Benesch, Friedlander, Coplan & Aronoff LLP  
Charles P. and Julia Bolton  
Jeanette Grasselli Brown  
The Bruening Foundation  
Harry and Mary Ann Carlson  
The Cleveland Foundation  
Cleveland-Cliffs, Inc.  
The George W. Codrington Charitable Foundation  
Manohar L. and Chandra K. Daga Deloitte  
Henry C. Doll  
Dominion Foundation  
Richard M. Donaldson  
Eaton Corporation  
EY  
FirstEnergy Foundation  
Fox Charitable Foundation  
William L. Garrison and Mary Jo Mlakar  
The George Gund Foundation  
Bruce T. and Deborah Goode  
Bernard D. and Susan Goodman  
Florence S. Goodman  
Barbara H. Gustafson  
Haskell Fund  
Michael J. and Jane R. Horvitz  
Howmet Aerospace Foundation  
Huntington National Bank  
Patricia M. Inglis  
Ceena R. Jewell  
The John Huntington Fund for Education  
Martha Holden Jennings Foundation  
Bernard L. and Nancy Karr  
Margaret A. Kennedy and Robert Paul KeyBank  
Kiwanis Foundation of Cleveland, Inc.  
Elroy D. and Dee C. Kursh  
The Lincoln Electric Co.  
Gilbert and Carol Lowenthal  
The Lozick Family Foundation  
James G. Lubetkin  
The Lubrizol Corporation  
Lawrence A. Mack  
Jimmy A. Malone  
Richard D. and Margaret Margolis  
The Meisel Family Foundation  
Estate of Dorris C. Michalske  
Kenneth Moore  
Warren L. and Betsi Morris  
The Murch Foundation  
John P. Murphy Foundation  
David & Inez Myers Foundation  
Nordson Corporation Foundation  
Norhio Plumbing, Inc.  
Paul H. Pangrace  
Parker Hannifin Corporation  
Patricia A. Patrick  
The Perkins Charitable Foundation

PNC  
Dan Polster and Deborah Coleman  
Elinor G. Polster  
Charles and Sally I. Rich  
Rotary Club of Cleveland  
RPM International  
Michael Salkind and Carol Gill  
The Sears-Swetland Foundation  
The Sherwin-Williams Corporation  
Squire Patton Boggs  
Howard A. and Terri Steindler  
Joseph D. and Catherine Sullivan  
Howard and Sara Tucker  
The George Garretson Wade Charitable Trust #2  
Mary C. Warren  
The S.K. Wellman Foundation  
Jane D. White Fund No. 2  
Thomas White Foundation  
WJW Fox 8 Cleveland

**10+ YEARS TOTAL GIVING**

The Abington Foundation  
ACE Mentor Program of Cleveland  
Kristen Baird Adams and David Legeay  
Thomas W. and Joann Adler  
Rita Andolsen  
Curtis R. Arrington  
Ric and Kate Asbeck  
Frank Balass  
Bank of America  
Jonathan E. and Debbie Bartlett  
Martha Basile  
Christopher and Tina Benavides  
Joseph Beno  
Aaron M. Berger  
Jack W. & Shirley Berger Fund of the Jewish Federation  
Pat Bishop  
Robert A. and Eileen Blattner  
Flora Blumenthal  
Michael Bohinc  
Cynthia Emlen Boncella and Keith Anderle  
Brent M. and Barb Buckley  
Stephanie and Jeff Bunsey  
Charlotte C. Burgin  
The Burton D. Morgan Foundation  
Charles M. and Susan I. Caito  
Calfee, Halter and Griswold LLP  
Capital One  
Case Western Reserve University  
Sunil and Cynthia Chand  
City of Cleveland



\$500

**An investment in College Now advising services results in an average of \$100,000 in financial aid awarded per student over four years of college**

Cleveland Beer Week, Inc.  
 Cleveland Browns Foundation  
 Cleveland Cavaliers  
 Cleveland Clinic  
 Cleveland Guardians  
 Cleveland State University  
 Cohen & Company  
 Michael and Bonnie Cole  
 The Community Foundation of Lorain County  
 Tom Corrigan and Diane Downing  
 Michael A. Costanzo  
 Colleen M. Craven  
 William W. Cushwa  
 Cuyahoga County  
 Eric O. Davis, Sr.  
 Brody and Elizabeth Day  
 Deaconess Foundation  
 Gary S. and Andrea Desberg  
 Roderick and Barbara Dibble  
 Christine & Guido DiGeronimo Foundation  
 Robert and Jennifer DiGeronimo  
 Robert and Sarah Durham  
 Vincent and Karen Eckdahl  
 Judith and Thomas J. Embrescia  
 Richard C. and Cynthia Marie Fairman  
 Fifth Third Bank  
 Lauren Rich Fine  
 Catherine Fishbach  
 R.L. Fortney Management, Inc.  
 Lee A. Friedman and Joe Gogol  
 Barry and Sandra Gabel  
 The Giant Eagle Foundation  
 Barbara Ginn  
 Joyce Glickman  
 Matthew Glickman and Susie Hwang  
 Deborah Glosserman  
 Allan Goldner  
 Murray A. Goldstone  
 Gary and Lois Goldwasser  
 William L. and Jean C. Gordon  
 Cathy and Bill Graham  
 Greater Cleveland Partnership  
 Burt W. and Beatrice Griffin  
 Richard Gross  
 Norman and Cheryl Gutmacher  
 Charles and Kathie Hardin  
 John S. and Elaine M. Hibshman  
 Shane Hollett  
 Charles R. Honton and Margaret Beck  
 Kate Howley  
 Joseph K. and Anne Juster

John L. and Virginia Keiser  
 Miles and Nancy S. Kennedy  
 Carl D. and Carol H. Keske  
 Charles King and Catherine Keating  
 William R. and Jean Koehler  
 Alan S. and Susie Kopit  
 Charles and Joyce Kullik  
 John and Theresa Kunkel  
 Brian M. Kus  
 Steven Kutnick and Jacquelyn F. Darrow  
 Laborers Union - Local 897  
 Bobby R. Larkin, Sr. Charitable Association, Inc.  
 Brian Larson and Laurie J. Albright  
 Tom E. and Betsy Leib  
 The Fred A. Lennon Charitable Trust  
 Marcia Levine  
 Stephen and Lillian Levine  
 Julia S. Loeb  
 Nataliya A. and Andrey Lozovyy  
 Elton Lytle and Kristen Galewood  
 Mark and Susan Magyar  
 Frank and Lisa M. Malone  
 James P. and Melanie T. Maloney  
 Maltz Museum of Jewish Heritage  
 Jack, Joseph and Morton Mandel Foundation  
 Richard T. and Polly Marabito  
 Gregory A. and Shelley Marcus  
 Materion Corporation  
 Bridget M. McFadden and Thomas Sylvester  
 Patrick A. and Martha S. McGraw  
 Medical Mutual of Ohio  
 Megan L. Mehalko  
 Donald and Sally Messinger  
 MetLife Legal Plans, Inc.  
 The MetroHealth System  
 Clifford V. and Toni Miller  
 Mitchell's Ice Cream  
 Marc and Amy Morgenstern  
 Nicholas E. and Linda B. Moscalink  
 Patrick S. and Amy Mullin  
 David K. and Lori Neiswander  
 John G. and Karen R. Nestor  
 Evelyn B. Newell  
 Charles L. and Ann G. Newman  
 Gerald F. and Evelyn Newman  
 Michael M. Niro  
 Nissan of North Olmsted  
 Dale and Barbara Nitzsche  
 The Nord Family Foundation  
 Northern Trust Bank  
 Oatey Company  
 The O'Neill Brothers Foundation  
 Oswald Companies  
 Melissa A. Parey  
 Paul D. and Kim M. Pesses  
 Roland S. Philip and Linda M. Sandhaus  
 James R. Pierce  
 Pipefitters Local 120  
 Larry and Julia Pollock  
 Preformed Line Products Co.  
 Progressive Corporation  
 Andrew W. and Leslie Prusinski  
 PwC  
 Peter E. and Julie A. Raskind  
 The Ratner Miller Shafran Foundation  
 The Reinberger Foundation  
 Barbara S. Robinson\*

Todd and Shelley F. Rodman  
 Walter J. Romansky  
 Enid and David Rosenberg  
 Alan and Barbara Roskamm  
 Steven and Lydia Rzucidlo  
 James Saks  
 Joel Saltzman  
 Robert J. Sandrick  
 Brian F. Schaefer  
 George F. Schaefer  
 Donald S. and Toni Scherzer  
 John and Barbara Schubert  
 Michele Scott Taylor and Douglas Taylor  
 Lawrence M. and Sally Z. Sears  
 Fareed and Laura Siddiq  
 Robert and Donna Simoneau  
 Naomi G. and Edwin Z. Singer Family Fund  
 Stephanie and Jeffrey Spencer  
 Jill Stanley  
 Sally and Terry Stewart  
 The Helen F. Stolier and Louis Stolier Family Foundation  
 William Stultz  
 Swagelok Company  
 James and Kathleen Szabo  
 Lorraine Szabo  
 George M. and Julie A. Szeltner  
 Teamsters Local 407 Truck Drivers Union  
 Third Federal Savings & Loan  
 The Treu-Mart Fund  
 Tucker Ellis LLP  
 Sue M. and Bill Tyler  
 U.S. Bank Foundation  
 Universal Windows  
 Verizon Foundation  
 Vocon Design, Inc.  
 Roger and Jane Warner  
 Elizabeth H. Warshawsky  
 Kittie D. Warshawsky and Timothy J. Tibbitts  
 Jeffrey M. and Hallie Wasserman  
 George A. Wenz  
 Westfield Insurance Foundation  
 Tharal L. White  
 Dickson L. and Ann T. Whitney  
 Reginald A. and LaRon Wilkinson  
 William M. Weiss Foundation  
 Danny R. and Lin Williams  
 Peter and Robin F. Winokur  
 Alenka M. Winslett  
 Milton A. & Roslyn Z. Wolf Family Foundation  
 Lynn E. Wolfram  
 Margaret W. Wong  
 Philip Woodcock and Virginia Benjamin  
 Timothy and Sandy Wuliger  
 Dan and Ellen Zelman  
 Thomas Zlatoper  
 Mark and Diane Zupon

**5+ YEARS TOTAL GIVING**  
 Dan Abrams and Nan Cohen  
 Julie Allen  
 Mark J. and Jennifer L. Alstadt  
 Margaret M. Amour  
 Anthony Anfusio and Mary Rakauskas  
 Stephanie and Juan Antunez  
 Suzanne and Akram Boutros  
 Richard and Sherry R. Aronson  
 Lauren E. Backus

William and Jane Baldwin  
 Brian Banas  
 Banks-Baldwin Foundation  
 Barberton Community Foundation  
 Brian C. and Kristin Barren  
 Heather Beasley  
 Marilyn Bedol  
 Russell and Carolyn Beeler  
 Richard T. Benson  
 Ken Birch and Katrina Evans  
 Justine S. Blossom  
 Tess Boutros  
 Stanley and Amy Brady  
 Anna Brandt  
 Christopher Brandt and Beth Sersig  
 Gabe and Tracy Bruno  
 Sarah Bryson  
 Brian C. and Sherry D. Buckner-Sallee  
 Todd and Denise Bugansky  
 Donald H. Bullock and Catherine Kilbane  
 Theresa A. Burrage  
 Annette Busse  
 M.E. & F.J. Callahan Foundation  
 Karen J. Carcione  
 Cargill Incorporated  
 Margaret A. Cargill Foundation  
 Brian F. and Fiona Chambers  
 Yolanda Chanoine  
 Cindy Chapman  
 Jennifer Chess  
 Cleveland Metroparks  
 Michael and Jennifer Cogan  
 Michele L. Connell  
 Victor Courtney  
 Richard J. and Michelle B. Creger  
 Lynnette Crenshaw  
 Robert R. & Gay C. Cull Family Foundation  
 Cuyahoga Community College  
 DeWine Family Foundation, Inc.  
 Katinka Domotorffy and Benjamin Sprenger  
 Timothy R. and Stephanie W. Dorsey  
 Downtown Cleveland Alliance  
 Ward and Colleen Dumm  
 Dworken & Bernstein  
 Monroe and Marcia L. Elbrand  
 Letcher C. Eley, II  
 Charles and Kirsten M. Ellenbogen  
 Chastity Embrescia  
 Jeff and Leah Epstein  
 Irwin Epstein and Mary Lou Morella  
 Umberto and Maryellen Fedeli  
 Michael and Julie Ferkovic  
 Thomas J. and Barbara A. Ferkovic  
 Keniesha Fisher  
 Char and Chuck Fowler Family Foundation  
 Charles D. and Charlotte Fowler  
 Matthew H. and Erin Frank  
 Greg and Kathleen Freeh  
 Jasmine Freeman  
 Jennylee Gandarilla  
 Robert Gantzer  
 Richard Garnai  
 James R. and Laura Geuther  
 Gilbane Building Company  
 David and Brenda Goldberg  
 The Gail & Sheldon Goodman Family Foundation

Goodman Real Estate Services Group  
 Jenna Gorsuch  
 Mary Lou C. Gotman  
 Camille Graham  
 Kristen Gramajo  
 Sarah Griffin  
 John and Penny Grunden, Jr.  
 Valerie and William Harrell  
 Jason Harris and Bailey Capelle  
 Sheldon R. and Nancy W. Hartman  
 Harvard Business School Club of Northeastern Ohio  
 Elizabeth Honold  
 Kenneth and Kristi Horner  
 Sue Hustek  
 Anthony and Angie Spitalieri Ianiro  
 Deanna Jarvis  
 Linda Kane  
 Libby Kannard and Bill Janesh  
 Ira C. and Amy R. Kaplan  
 Douglas and Karen Katz  
 Amy E. Kellogg  
 Kathleen M. Kennedy and Doug White  
 R. Eric Kennedy  
 Christian and Kimberly Kenzig  
 Brett Ketvertis  
 Dorothy Klemm  
 Rosanne Klonaris  
 Michele L. Krantz  
 Robert D. Labes and Sheryl Markowitz  
 The Laub Foundation  
 Barbara Lichstein  
 Mary Maloney  
 Joseph Mannino  
 Richard and Jane Marcus  
 David Mayo  
 Nancy W. McCann  
 Medic Management Group  
 Ann Miley  
 Dale A. and Carol J. Miller  
 Lorraine Miller  
 Elaine Minch  
 Moen Incorporated  
 Beth E. Mooney  
 Michael J. and Petra P. Moran  
 Joseph J. and Sheri Morford  
 The Morshana Foundation  
 Adrienne Ferraro Mueller  
 Michael M. and Marcia Neundorfer  
 Ohio Concrete Resurfacing, Inc.  
 One Candle Foundation  
 Raju N. and Lisa Patel  
 Mayme R. Patthoff  
 Kristen Peed  
 Derrick and Kendall S. Perkins  
 Mark A. Phillips and Lita Gonzalez  
 Alexander Phipps  
 Sandra Pianalto  
 Amanda Pratt  
 Reminger Co., LPA  
 Christopher Riddle and Lauren Marchaza  
 Kathleen A. Rieter  
 Madeline and J. Harlen Rife  
 Diana S. Riley  
 Jonas Robinson  
 Andrew and Lynn Rollins  
 Timothy and Lisa Rose

**1,700**   
**community members**  
**representing over 500 employers**  
**serving as volunteer mentors**  
**for students receiving**  
**traditional College Now and**  
**Say Yes Cleveland scholarships**

Mark Ross  
 Traci and Scot Rourke  
 Donald J. and Kathleen Rynbrandt  
 Twyla Sales  
 Betsy K. Sampliner  
 Curtis Scheck  
 Richard F. and Elizabeth A. Schiferl  
 Scholnick Family Foundation  
 Stacey Schroeder  
 Katharyn Schwab  
 Racheal Seibert  
 Lauren Seymour  
 Stephanie Sherron  
 Thomas and Judith Shimko  
 Joanne Siegla  
 Jeremy and Emily Spivack  
 Sports & Scholars  
 Sean and Laurel Stack  
 David and Deborah Stahler  
 The Swamy Family Foundation  
 Michael Taylor  
 TEGNA Foundation  
 Kathleen A. Thompson  
 Thompson Hine LLP  
 Jerry Sue Thornton  
 The Timken Company  
 Ryan and Linda E. Tirk  
 Dianne Treska  
 Truist Foundation  
 Turner Construction  
 Union Home Mortgage Foundation  
 University of Akron  
 Charles E. and Adrienne Van Dyke  
 Deborah Vesey  
 Jessica R. Vitale  
 Nick and Courtney Walsh  
 Joseph J. and Eileen M. Ward  
 De'Antae Ware  
 Paul and Nancy Wellener  
 Krissie Wells and Alex Nosse  
 Jay Westbrook and Helen Williams  
 Tiffany White  
 Laurel Wilder and Zack Meisel  
 Marley A. Wilder  
 John S. Wilson and Lawrence Li  
 George Woidek and Gail Arnoff  
 Idelle Wolf  
 Steven and Ellen Young  
 Jeremy Zelis  
 Mark and Janice Zupon

**\$6.5 million**   
**total amount of scholarships distributed by College Now to high school graduates and adult learners last year**

\* deceased

**Community and Educational Partners**

ACE Mentor Program of Cleveland  
 Al Ihsan School  
 Ashland University  
 Auburn Career Center  
 Avon Local School District  
 Baldwin Wallace University  
 Bay Village City School District  
 Bedford City School District  
 Bellaire Puritas Development Corporation  
 Belmont College  
 Benedict College  
 Bennett College  
 Berea City School District  
 Berea College  
 Big Brothers Big Sisters of Greater Cleveland  
 Bluffton University  
 Bowling Green State University  
 Boys & Girls Clubs of Northeast Ohio  
 Breakthrough Charter Schools  
 Brecksville-Broadview Heights City School District  
 Broadway-Slavic Village P-16  
 Brunswick City School District  
 Bryant & Stratton College  
 Burten, Bell, Carr Development, Inc.  
 Care Alliance Health Center  
 Case Western Reserve University  
 The Centers for Families and Children  
 Central State University  
 Cincinnati Youth Collaborative  
 City Club of Cleveland  
 City Life Center  
 City of Cleveland  
 City Year  
 Clearview Local Schools  
 Cleveland Browns  
 Cleveland Central Catholic High School  
 The Cleveland Foundation  
 Cleveland Guardians  
 Cleveland Heights-University Heights School District  
 Cleveland Institute of Art  
 Cleveland Metroparks  
 Cleveland Metropolitan School District  
 The Cleveland Museum of Natural History  
 Cleveland Neighborhood Progress  
 Cleveland Public Library  
 Cleveland Rape Crisis Center  
 Cleveland State University  
 Cleveland Transformation Alliance  
 Cloverleaf Local School District  
 Code M Magazine  
 College of Wooster  
 Colorado College  
 Columbia Local School District  
 Columbus College of Art and Design  
 Columbus State Community College  
 Cuyahoga Community College  
 Cuyahoga County  
 Cuyahoga County Public Library  
 Cuyahoga Valley Career Center  
 Deaconess Foundation  
 Denison University  
 Dickinson College  
 East Cleveland City School District  
 ECMC Foundation

Educational Service Center of Northeast Ohio  
 Elyria Catholic High School  
 Elyria City School District  
 Esperanza, Inc.  
 Euclid City Schools  
 Euclid Public Library  
 Fairfax Renaissance Development Corporation  
 Fairview Park High School  
 Federal Reserve Bank  
 Firelands Local School District  
 Friendly Inn Settlement  
 Future Plans  
 Garfield Heights City School District  
 Graduate Network  
 Great Lakes Science Center  
 Greater Cleveland Food Bank  
 Greater Cleveland Neighborhood Centers Association  
 Greater Cleveland Partnership  
 Greene County College Partnership  
 Guilford College  
 The George Gund Foundation  
 Habitat for Humanity  
 Higher Education Compact of Greater Cleveland  
 Highland Local School District  
 Hiram College  
 Hispanic Roundtable  
 Hocking College  
 Holy Name High School  
 Horizon Education Centers  
 Howard University  
 I Know I Can  
 Ithaca College  
 Job Corps  
 John Carroll University  
 John Huntington Fund for Education  
 Joseph's Home  
 Kent State University  
 Kenyon College  
 KeyBank  
 Kiwanis Foundation of Cleveland, Inc.  
 Lake Erie Ink  
 Lakeland Community College  
 Lakewood City Schools  
 Link 4 Schools  
 Lorain City School District  
 Lorain County Community College  
 Lorain County JVS  
 Lorain County Urban League  
 MAGNET  
 Magnificat High School  
 Malone University  
 Manufacturing Works  
 Maple Heights City Schools  
 Matrix Trade Institute  
 Mayfield City School District  
 Medaille University  
 Medical Mutual of Ohio  
 Merrick House  
 MetroHealth Buckeye Health Center  
 Miami University  
 Midview Local School District  
 Minds Matter of Cleveland  
 Moen Incorporated  
 Moms First  
 Morehouse College

MyPath Mahoning Valley  
 NASA Glenn Research Center  
 National College Attainment Network  
 National Scholarship Providers Association  
 Neighborhood Connections  
 Neighborhood Leadership Institute  
 NEO Talent Exchange  
 New Hope Fellowship Church  
 NewBridge Cleveland  
 Norman S. Minor Bar Association  
 North Olmsted City School District  
 The North Coast College  
 Northeast Ohio Hispanic Center for Economic Development  
 Northeast Ohio Voter Advocates  
 Notre Dame College  
 Oberlin College  
 Ohio Association of Community Colleges  
 Ohio Association of Student Financial Aid Administrators  
 Ohio Department of Education  
 Ohio Department of Higher Education  
 Ohio Means Jobs  
 Ohio Northern University  
 The Ohio State University  
 Ohio University  
 Ohio Wesleyan University  
 OhioGuidestone  
 Olmsted Falls City School District  
 Open Doors Academy  
 Padua Franciscan High School  
 Parma City School District  
 Passages  
 PNC  
 Polaris Career Center  
 Princeton University  
 Promise Academy  
 PwC  
 Rochester Institute of Technology  
 Rocky River City School District  
 Saint Martin DePorres High School  
 Salvation Army  
 Say Yes to Education Cleveland  
 Scholarship Central  
 Seeds of Literacy  
 ServeOhio  
 Shaker Heights City School District  
 Shape Cleveland  
 Shawnee State University  
 Sheffield-Sheffield Lake City Schools  
 Sisters of Charity Health System  
 Solon City School District  
 South Euclid-Lyndhurst City School District  
 St. Edward High School  
 St. Ignatius High School  
 St. Joseph Academy  
 Stark Education Partnership  
 Stark State College  
 Starting Point  
 Step Forward  
 Summer on the Cuyahoga  
 Summit Education Initiative  
 Syracuse University  
 Teach for America  
 TeamNEO  
 Terra State Community College  
 Towards Employment  
 Trinity High School

Tufts University  
 U.S. Army  
 U.S. Department of Education  
 U.S. Naval Academy  
 United Way of Greater Cleveland  
 United Way of Summit County  
 University Circle Inc.  
 University of Akron  
 University of Chicago  
 University of Cincinnati  
 University of Dayton  
 University of Rio Grande  
 University of Toledo  
 University Settlement  
 Urban League of Greater Cleveland  
 Urban League of Lorain County  
 Ursuline College  
 Verto Education  
 Villa Angela-St. Joseph High School  
 Wadsworth City School District  
 Warrensville City School District  
 Washington State Community College  
 Washington University  
 Wellington Exempted Village School District  
 Westfield Insurance Corporation  
 Wickliffe City School District  
 Williams College  
 WKYC  
 Women of Color Foundation  
 Women's Leadership Guild  
 Wright State University  
 Young Latino Network  
 Youngstown State University  
 Youth Opportunities Unlimited  
 YWCA Greater Cleveland

**Scholarship Partners**

ACE Mentor Program  
 Althans Scholarship Fund  
 The Antunez Family Endowed Scholarship  
 Suzanne Aral-Boutros Scholarship Fund  
 Joseph Babin Endowed Scholarship Fund  
 Barberton Community Foundation  
 Robert Patrick Benko Scholarship Fund  
 Jack W. & Shirley Berger Scholars of Promise Fund of the Jewish Federation of Cleveland  
 Boodle Endowed Scholarship Fund  
 Britton Endowed Scholarship Fund  
 Eva L. and Joseph M. Bruening Foundation Endowed Scholarship Fund  
 Micki Byrnes Scholarship Fund  
 Cambodian Scholarship for Excellence Fund  
 Bill Christopher-Alcoa Leadership Scholarship Fund  
 The Christopher Family Scholarship Fund  
 Cleveland Association of Phi Beta Kappa  
 Cleveland Browns  
 Cleveland Clinic Louis Stokes Scholars Scholarship Fund  
 The Cleveland Foundation  
 Cleveland Guardians  
 Roy and Willia Coleman Scholarship Fund  
 College First Fund of the Cleveland Foundation  
 The College Now Alumni Endowed Scholarship Fund  
 Shirley and Robert Coplan Endowed Scholarship Fund

Cuyahoga County Scholarship Fund  
 Denmark Tibbs HBCU Scholarship Fund  
 Mary M. Doll Endowed Scholarship Fund  
 East High Alumni Association  
 Thomas J. and Judith Embrescia Endowed Scholarship Fund  
 Even Cut Abrasive Company  
 Richard J. Fasenmyer Foundation Scholarship Fund  
 Charles and Francis Feiner Endowed Scholarship Fund  
 Suzanne Ferrante-Velvet Case Scholarship Fund  
 Ferro Foundation Endowed Scholarship Fund  
 Robert L. Fortney Endowed Scholarship Fund  
 Elaine Young Friedman Endowed Scholarship Fund  
 Eleanor Gerson Endowed Scholarship Fund  
 David Goldston Scholarship Fund  
 George Gund Foundation  
 Sondra and Stephen Hardis Endowed Scholarship Fund  
 Henkel Consumer Adhesives Endowed Scholarship Fund  
 George M. Humphrey Scholarship Fund  
 Gilbert and Louise Ireland Humphrey Endowed Scholarship Fund  
 The John Huntington Fund for Education  
 David S. Inglis Endowed Scholarship Fund  
 The Intown Club of Cleveland Scholarship Fund  
 Mayor Frank G. Jackson City of Cleveland Black History Scholarship Fund  
 Mayor Frank G. Jackson Endowed Scholarship Fund  
 Mayor Frank G. Jackson - Levin College of Urban Affairs Scholarship  
 Charles and Margaret Jones Scholarship Fund  
 Sharon Kearns Endowed Scholarship Fund  
 Margaret A. Kennedy Endowed Scholarship Fund  
 KeyBank  
 Kiwanis Scholarship Fund  
 KnowledgeWorks Foundation Endowed Scholarship Fund  
 Charles E. Kullik Scholarship Fund  
 Laborers' International Union of North America, Local No. 894  
 Marcia LaRiche Endowed Scholarship Fund  
 Bobby R. Larkin, Sr. Charitable Association, Inc. Endowed Scholarship Fund  
 Leadership Cleveland Endowed Scholarship Fund  
 The Lehman Family Scholarship Fund  
 Fred A. Lennon Charitable Trust  
 The Lawrence R. Loeb Scholarship Fund  
 Lowenthal Family Scholarship Fund  
 Malone Family Scholarship Fund  
 Maltz Museum of Jewish Heritage  
 Bravitt Cola Manley Sr. Scholarship Fund  
 Manufacturing Sector Partnership Scholars Program  
 Marcus Thomas Scholarship Fund  
 Materion Corporation  
 Elizabeth Ring Mather & William Gwinn Mather Endowed Scholarship Fund

Meisel Family Scholarship Fund  
 Greg Moore Scholarship Fund  
 David A. and Florence F. Moritz Endowed Scholarship Fund  
 David & Inez Myers Foundation Endowed Scholarship Fund  
 New Generation Scholarship Fund  
 Nordson Corporation Foundation  
 Northern Trust  
 Ohio Machinery Education and Opportunity Foundation Scholarship Fund  
 Ohio Thoroughbred Scholarship Fund  
 The One Candle Endowed Scholarship Fund  
 O'Neill Endowed Scholarship Fund  
 Cora Pauline Parham Scholarship Fund  
 Pipefitters Local 120  
 Millicent W. Pitts Endowed Scholarship Fund  
 Plain Dealer Endowed Scholarship Fund  
 Gloria Pointer Scholarship Fund  
 Preformed Line Products Company  
 President's Council Scholarship Fund  
 Ann Pinkerton Ranney Scholarship Fund  
 Raskind Family Scholarship Fund  
 Ratner Miller Shafran Foundation  
 William Roberts Endowed Scholarship Fund  
 Walter Romansky Endowed Scholarship Fund  
 Samuel Rosenthal Foundation Endowed Scholarship Fund  
 Mark Ross Scholarship for College Completion in Finance  
 Rotary Club of Cleveland  
 Say Yes to Education Cleveland  
 Robert J. Schneider Endowed Scholarship Fund  
 Fred E. Scholl Charitable Foundation  
 Augie Schroeder Endowed Scholarship Fund  
 Schroeder Family Scholarship Fund  
 The Sherwin-Williams Corporation  
 Kent H. Smith Charitable Trust  
 Solow Endowed Scholarship Fund  
 The Stocker Foundation Endowed Scholarship Fund  
 Swagelok Advantage Scholarship Fund  
 Swamy Family Scholarship Fund  
 Swedlow Foundation Scholarship Fund  
 Teamsters Truck Drivers Union Local 407  
 Temple-Tifereth Israel Scholarship Endowment Fund for Promising Students  
 Greg and Suzanne Thaxton Endowed Scholarship Fund  
 Union Home Mortgage Scholarship Fund  
 University Hospitals Endowed Scholarship Fund  
 Urban Squash Cleveland Scholarship Fund  
 Deborah Vesey Scholarship Fund  
 Visible Voice Scholarship Fund  
 Florence C. Walsh Endowed Scholarship Fund  
 Wasserman Endowed Scholarship Fund  
 Waxman Family Scholarship Fund  
 William M. Weiss Endowed Scholarship Fund  
 Jane D. White Fund No. 2 Scholarship Fund  
 Milton A. and Roslyn Z. Wolf Scholarship Fund  
 Youth for Holiness Scholarship Fund  
 Youth Opportunities Unlimited Carol Rivchun Educational Development Fund Employee Scholarship Fund

# College Now

## 2022 Board of Directors

### CHAIR

Michael Cogan, Northern Trust

### TRUSTEES

Kristen Baird Adams, PNC

Rita Andolsen, The MetroHealth System

Stephanie Antunez, California Closets

Josh Bagshaw, Sherwin-Williams Corporation

Suzanne Aral-Boutros, Community Leader

Brian Barren, Cleveland Guardians

April Miller Boise, Intel Corporation

Gabe Bruno, The Lincoln Electric Co.

Brent Buckley, Buckley King LPA

Harry Carlson, The Lincoln Electric Co. (ret.)

Matt Carroll, Cuyahoga County

Shelly Cayette-Weston, Cleveland Cavaliers

Timothy Cosgrove, Cosgrove Johnhenry LLC

Marisa T. Darden, Squire Patton Boggs

Tom Dewey, Medical Mutual of Ohio

Katinka Domortoffy, Community Leader

Ward Dumm, Swagelok Corporation (ret.)

Jitin G. Eidnani, Cognizant

Judith Embrescia, Community Leader

Lauren Rich Fine, Gries Financial Corporation

Rich Garcia, Bluepoint Capital Partners

Ashley George, Moen Americas

James R. Geuther, Truist Bank

Blaine A. Griffin, Cleveland City Council

Richard (Rick) Gross, Grant Thornton LLP (ret.)

Tonika Hammonds, EY

Jessica Jung, Oswald Companies

Kevin Kelley, Porter Wright

Katie Kennedy, Wabtec Corporation

Margaret Kennedy, Benesch, Friedlander,  
Coplan & Aronoff LLP (ret.)

Veena Khanna, KeyBank

William Koehler, Team NEO

Alan S. Kopit, MediLogix LLC

Jimmy Malone, iHeart Media

Megan L. Mehalko, Benesch, Friedlander,  
Coplan & Aronoff LLP

James Merz, Westfield Insurance Corporation

Joseph Morford, Tucker Ellis LLP

Patrick S. Mullin, Deloitte (ret.)

A.D. Naik, Eaton Corporation

Elizabeth Newman, CBIZ, Inc.

Richard Pohle, Huntington National Bank

Sam Prentis, Bank of America

Darnella Robertson, FirstEnergy Corporation

Enid Rosenberg, Community Leader

Mark Ross, PwC (ret.)

Traci Rourke, McMaster-Carr Supply Company

Dalithia Smith, Oatey Company

Sean Stack, Proterial Ltd.

Sally Stewart, Howard Hanna

J.D. Sullivan, Jr., MFH Partners

Ingrid Tolentino, MetLife Legal Plans

Susan M. Tyler, Community Leader

Deborah Vesey, Deaconess

Community Foundation (ret.)

Andrew Watterson, blue csr strategies

Christopher Williams, Calfee, Halter & Griswold LLP

Felicia Williams, Perficient, Inc.

Adam Zelwin, PwC

### EMERITI

Jeanette Grasselli Brown, Standard Oil Company (ret.)

Howard A. Steindler, Benesch, Friedlander,  
Coplan & Aronoff LLP

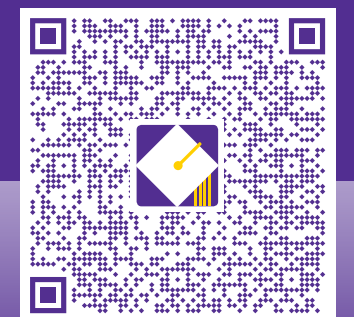
# College Now

## 2022-23 Locations

Al Ihsan School  
Alfred A. Benesch K-8 School  
Avon High School  
Bard High School Early College  
Cleveland  
Bay High School  
Bedford High School  
Berea-Midpark High School  
Brecksville-Broadview Heights  
High School  
Brooklyn High School  
Brookside High School  
Brunswick High School  
Brush High School  
Buckeye High School  
Campus International High School  
Clearview High School  
Cleveland Central Catholic  
High School  
Cleveland Heights High School  
Cleveland High School for  
Digital Arts  
Cleveland Metro Remote  
High School  
Cleveland School of The Arts  
Cloverleaf High School  
Collinwood High School  
Columbia High School  
Davis Aerospace & Maritime  
High School  
Design Lab Early College  
Durling Middle School  
East Technical High School  
Elyria Catholic High School  
Elyria High School  
Euclid High School  
Facing History High School  
@Charles Mooney  
Fairview High School  
Firelands High School  
Garfield Heights High School

Garrett Morgan School  
of Science  
Garrett Morgan School of  
Leadership & Innovation  
George Washington Carver  
K-8 School  
Ginn Academy  
Glenville High School  
Heskett Middle School  
Highland High School  
Holy Name High School  
John Adams School College  
& Career Academy  
John Hay Early College High School  
John Hay School of Architecture  
& Design  
John Hay School of Science  
& Medicine  
John F. Kennedy High School  
John Marshall School of Civic  
& Business Leadership  
John Marshall School of Engineering  
John Marshall School of Information  
Technology  
Keystone High School  
Lakewood High School  
Lincoln-West School of  
Global Studies  
Lincoln-West School of Science  
and Health  
Longfellow Middle School  
Lorain High School  
Lorain JVS  
Magnificat High School  
Mansfield Middle School  
Mansfield Senior High School  
Maple Heights ECAC  
Maple Heights High School  
Max S. Hayes High School  
MC<sup>2</sup> STEM High School  
Milkovich Middle School  
Monticello Middle School

New Comers Academy  
New Technology West  
Normandy High School  
North Olmsted High School  
North Ridgeville High School  
Olmsted Falls High School  
Padua Franciscan High School  
Parma High School  
Patrick Henry K-8 School  
Paul L. Dunbar Elementary School  
Rhodes College & Career Academy  
Rhodes School of Environmental  
Studies  
Riverside School  
Rocky River High School  
Roxboro Middle School  
Saint Martin De Porres  
School of One  
Shaker Heights High School  
Shaw High School  
Solon High School  
St. Edward High School  
St. Ignatius High School  
St. Joseph Academy  
Trinity High School  
Valley Forge High School  
Villa Angela-St. Joseph High School  
Wadsworth High School  
Warrensville Heights High School  
Warrensville Heights Middle School  
Waverly K-8 School  
Wellington High School  
Westlake High School  
Whitney Young (PreK-8)  
Wickliffe High School  
Wilbur Wright Elementary School



Please scan the QR code here for a map of  
school locations and advisor contact information.





# College Now

*Greater Cleveland*

1500 W. 3rd Street, Suite 125  
Cleveland, OH 44113  
216.241.5587

[www.collegenowgc.org](http://www.collegenowgc.org)

